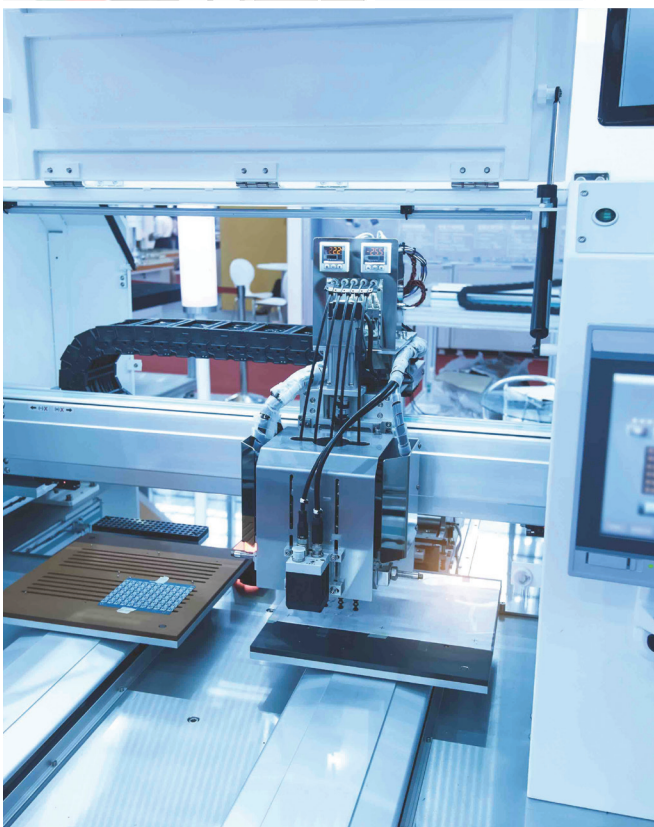
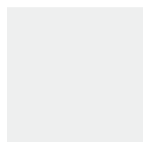


# ACCU TECH USA

A Tavoron Company



## CAPABILITIES & SERVICES



[accu-techusa.com](http://accu-techusa.com)

# AUTOMATION & MOTION SOLUTIONS

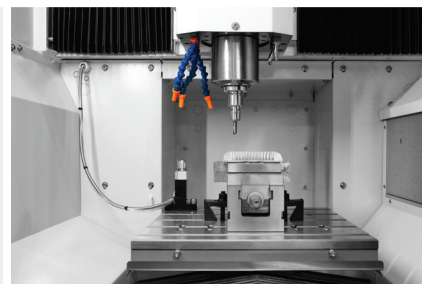
## WHY CHOOSE ACCU TECH USA

Accu Tech USA offers a diverse set of expertise and competencies to provide our customers with a competitive advantage. We are committed to customer success and by partnering with Accu Tech USA, you benefit from our understanding of functional product specifications, our years of engineering expertise, our in house machine shop and our local sales representatives - all ensuring that your project is completed on time, on budget and designed with your specific application in mind.

Whether it's linear guides, actuators, ball screws, multi-axis cartesian systems or robotics, our knowledgeable engineering, production staff and customer service teams stand ready to assist you with choosing the right product, customizing products to fit your application, implementation and training.

## COMPANY MISSION

Accu Tech USA offers one of the largest selections of actuators, linear guides and ball screws in North America. The company specializes in providing applications engineering support and machining services to companies ranging from health care and optometry to packaging and automated machinery. Headquartered in Wake Forest, NC, the company's mission is to provide quality, cost-effective motion solutions with exceptional accuracy and precision to give our customers a competitive advantage.

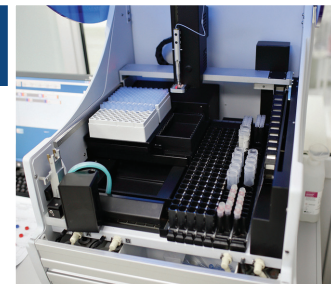


## MARKETS SERVED

- Semi Conductor
- Woodworking
- CNC Machine Tool
- Medical Life Science
- Packaging and Converting
- Factory Automation
- Vending

## ABOUT US

- Founded in 2009
- Headquartered in North Carolina
- Employs 20+ employees (design/application engineering, customer support, production, sales/marketing)
- 18 local sales representatives nationwide



## OUR PRODUCTS

### LINEAR GUIDES

Accu Tech USA delivers reliable, high precision linear guides designed for precise linear motion. Made from high quality steel alloys and featuring corrosion resistant platings, our low maintenance linear guides provide our customers with improved reliability and productivity while minimizing maintenance costs. As an added benefit, our interchangeable design allows for slides and rails ordered separately to make sets as required to enable flexibility and maximize your investment.

In stock and ready to ship, quickly source your required components today to continue driving innovation forward and to give your business a competitive edge.

#### STANDARD LINEAR GUIDES: MSA, MSB, MSG

- Size: 15, 20, 25, 30, 35, 45, 55, 65
- MSG Size: 17, 21, 27, 35
- 4000 mm rail lengths
- 6000 mm available (MSG 3000 mm)
- Stainless Steel Options Available

#### MINIATURE STAINLESS STEEL (STANDARD AND WIDE VERSIONS): MSC, MSD

- Size: 07, 09, 12, 15
- 1000mm rail lengths
- 2000mm available
- Full Steel, Hi-Temp, Vacuum

#### BALL CAGED LINEAR GUIDES: SME

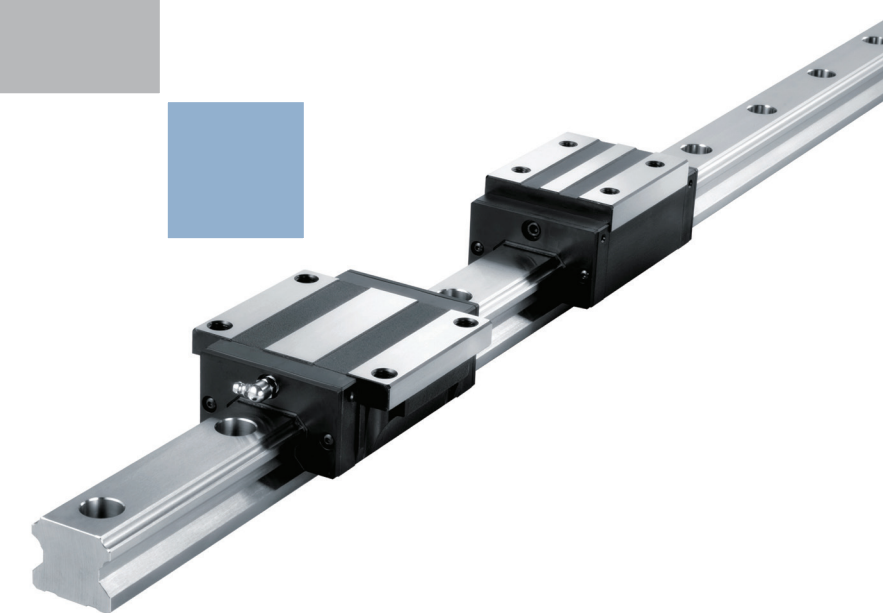
- Size: 15, 20, 25, 30, 35
- 4000mm rail lengths
- Silent Type, Low Vibration

#### ROLLER LINEAR GUIDES: MSR, SMR

- Size: 25, 30, 35, 45, 55, 65
- 4000 mm Rail Lengths

#### CUSTOMIZATION

- Interchangeable design
- Plating options
- Square and Flanged Carriages
- Various Pre-Load Levels
- Butt Joints for Extended Lengths
- All Seal Options Available
- Fast Lead Times
- Special Machining Features
  - Dowel Holes
  - Tapped Holes
  - End of Rail Pinning







## ACTUATORS

Accu Tech USA offers a variety of actuator types to meet your specific application including: Ball Screw, Belt Drive, Precision and Rod Style, Linear Motor, Rod Style Electric Cylinders and Medical Actuators. Designed to be rugged, durable, and easy to maintain, our complete product line features an affordable solution for any application. Available in a wide range of stroke lengths, speeds, and customizable options, our expert team of engineers can help you determine the best solution for your application.

### BALL SCREW ACTUATOR

- 10 micron repeatability
- C7 Ball Screw accuracy
- Higher precision available
- Ground Ball Screws
- 3 micron repeatability available

### PRECISION ROD STYLE ACTUATOR

- Thrust loads up to 10kN (2200lbf)
- Up to 1500mm stroke
- Integrated bearing design for high side load capacity

### BELT DRIVE ACTUATOR

- 40 micron repeatability
- Integrated planetary reducer options
- 5 meter stroke continuous length extrusion
- Multiple extrusion, assemble in the field for long lengths
- Fixed belt moving pinion actuators - for Z-axis, multiple driven carriages on same actuator

### LINEAR MOTOR ACTUATOR

- Multiple motor designs and frame sizes
- Very high speeds, acceleration and accuracy

## BALL SCREWS

At Accu Tech USA, we understand that selecting the right ball screw for your specific application is critical. What are you trying to accomplish? What is the required accuracy class? speed? size? Are there noise or lubrication requirements to be considered?



Our ball screws, made of high-grade alloy steel, easily transmit rotary motion into linear motion providing superior rigidity and long durability. With the ability to provide custom machining per print, reverse engineering services and custom lubrication options, our experienced team of sales staff and engineers will work with you to select the right ball screw for the application.

### METRIC PRECISION GROUND BALL SCREWS

- Accuracy Class: C0, C1, C3, C5
- Size: 4mm DIA UP TO 120mm DIA

### METRIC PRECISION ROLLED BALL SCREWS

- Accuracy Class: C5, C7, C10
- Sizes: 6mm DIA UP TO 80mm DIA

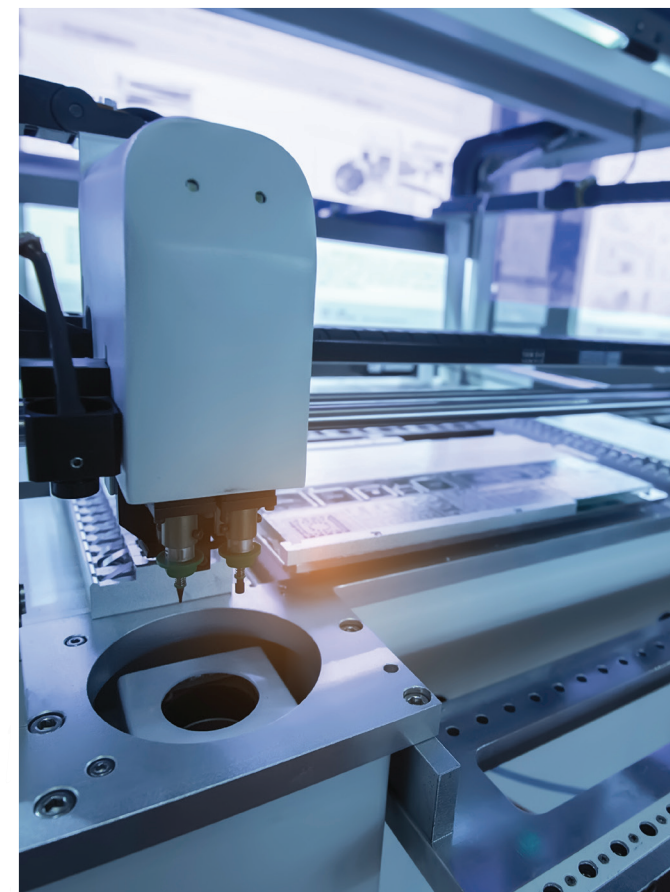
### EMERGENCY BALL SCREW REPAIR SERVICES

### ROD STYLE ELECTRIC CYLINDER ACTUATORS

- Low cost alternative to pneumatic cylinders
- Load capacities up to 1540 lbs.
- Maximum travel speed up to 2.5 m/s
- Variable stroke lengths
- Limit switches
- Feedback and closed loop options
- IP 54, IP 65, IP 69K compliant
- Customer specified connectors
- AC/DC power source options
- Remote control and pendant capable

### MEDICAL ACTUATORS

- Wheel chair and patient bed
- Low noise
- Pendants and controllers
- Column lifts
- Synchronized actuators, two axis or four axis



### HIGH SPEED/HIGH LEAD BALL SCREWS

- 12x32, 20x40, 25x50

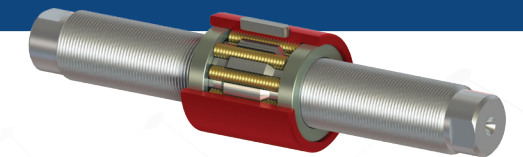
### REVERSE ENGINEERING SERVICES

- We can create a CAD drawing from your Ball Screw

### MACHINED TO PRINT

### OTHER TECHNOLOGY

- Rotating on Ball Nut drive design
- Ball Splines
- Roller Screws
- Lead Screws
- Ball Screw/Ball Spline Combinations
- Fixed/Simple End Supports



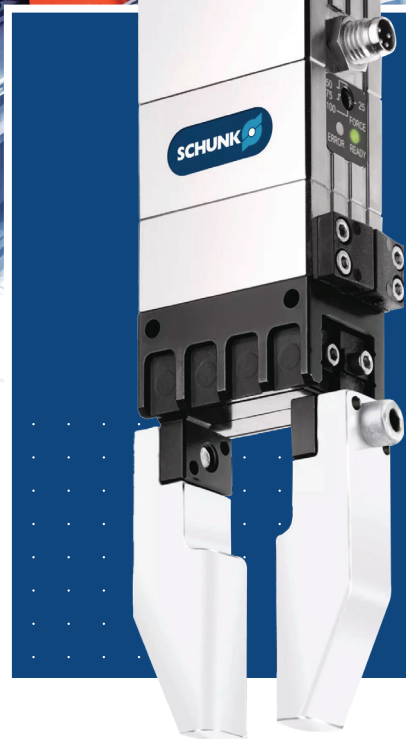
## ROLLER SCREWS

Accu Tech USA offer satellite roller screws that are used to seamlessly transform rotary motion movements into linear motion movements and vice versa. Our state of the art high load capacity roller screws allow you to design the smallest screw to achieve the highest load capacity. The range comprises of satellite roller screws with no recirculation (RV and HRV), inverted roller screws (RVI), differential roller screws (RVD) and screws with recirculating rollers (RVR).

### FEATURES

- High axial load capacity
- Long lifespan
- High efficiency
- No backlash
- Extreme high rigidity
- High Rotation Speed (RV systems)
- Small leads (from 0.25mm) with wide diameter
- Thin leads (to 0.02mm) with medium diameter





## ELECTRIC GRIPPERS

Accu Tech USA offers a wide range of grippers that are ideal for parts handling. These force sensitive grippers can be set to be torque limited to ensure parts will not be damaged during handling. Coupled with a controller, you can easily program the gripper to interface with your PLC or other user interface.

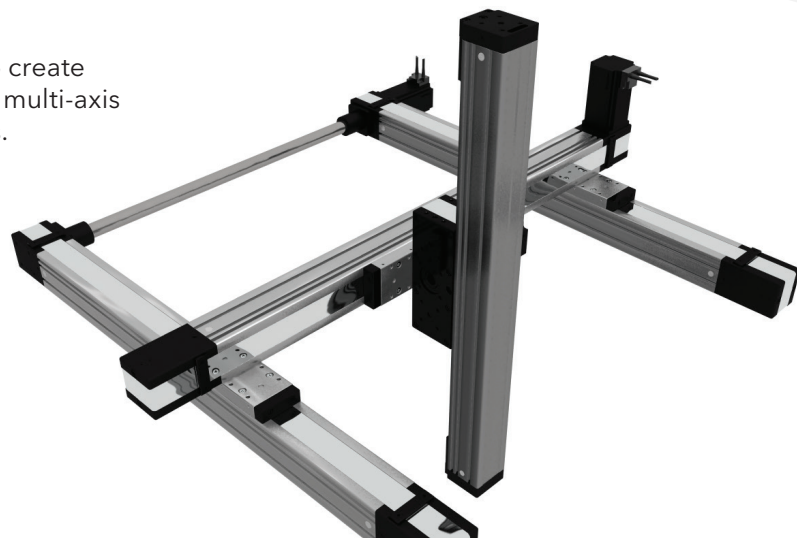
- Speed ranges from 5-50mm/sec
- Force range from 3.9N - 150N
- Offered with servo/controller build in
- Repeat-ability =/-.002mm

## MULTI-AXIS SYSTEMS

Accu-Tech USA's linear actuators can be combined to create various multi-axis cartesian systems. We offer turnkey multi-axis systems, standard configurations and custom designs.

### ADDITIONAL FEATURES

- Brackets and Cable Tracks
- Limit Switches (NPN, PNP)
- Couplings included per Axis
- Matching Motor Adapter Plate included per Axis
- Torque Tube for synchronized axis



## COLLABORATIVE ROBOTS

Accu Tech USA's collaborative robots, from TechMan Robot, feature simple programming, innovative integrated vision capabilities and the latest safety features to enable rapid deployment in a variety of applications. With the vision functionality completely integrated with the collaborative robot platform and our easy-to-use interface, it's simple to program and achieve a visual pick and place within minutes. If you need an easy to operate CoBot that can be rapidly deployed with minimal maintenance, contact us today to learn more.

- Achievable Range: 700mm, 900mm, 1100mm, 1300mm, 1702mm, 1902mm
- Load Capacity: 6kg, 4kg, 12kg, 14kg, 20kg, 25kg, 30kg
- Speeds: up to 1.3 m/s
- Repeatability: +/-0.1mm
- Built in Vision System: 1.2M/5M pixels color camera

### INDUSTRIAL APPLICATIONS

- 3D printing
- 3C industry
- Automobile industry
- Food industry
- Machine Tending
- Packaging
- Inspection



## PNEUMATICS

As the Southeast Master Distributor for AirTAC, Accu-Tech USA offers a comprehensive selection of pneumatic components including actuators, solenoid valves, air preparation units (FRLs), fittings, tubing, and accessories. Engineered for precision, durability, and easy integration, these products are essential to high-performance automation systems. Trusted across industries such as automotive, electronics, medical, food packaging, textiles, and machinery manufacturing, AirTAC solutions help drive efficiency and reliability in every application.



## CUSTOM ENGINEERED SOLUTIONS

The Accu Tech USA Machine Shop capabilities provides our customers with quality machined parts as a value added service to fully satisfy our customers' requirements. Working collectively with our production and sales teams, we are able to provide complete, cost effective, and high quality solutions to fulfill our customers goals.

### FEATURES

- CNC Machining
- Precision Milling and Turning
- Custom Parts
- Custom Designs
- Precision Inspection Capabilities
- Reverse Engineering
- CAD/CAM Capabilities







## CONTACT US TODAY

Need help with an active project? Do you need Sizing/Selection Tools to quickly size the right product? Our team of experienced design engineering, application engineering and custom machining technicians are ready to assist you in the design, selection and implementation of your project.

**ACCU TECH USA**  
A Tavoron Company

12339 Wake Union Church Road, Suite 110  
Wake Forest, NC 27587  
919.863.0837  
sales@accu-techusa.com

**[www.accu-techusa.com](http://www.accu-techusa.com)**