

HEXALIFT

Telescopic Lift

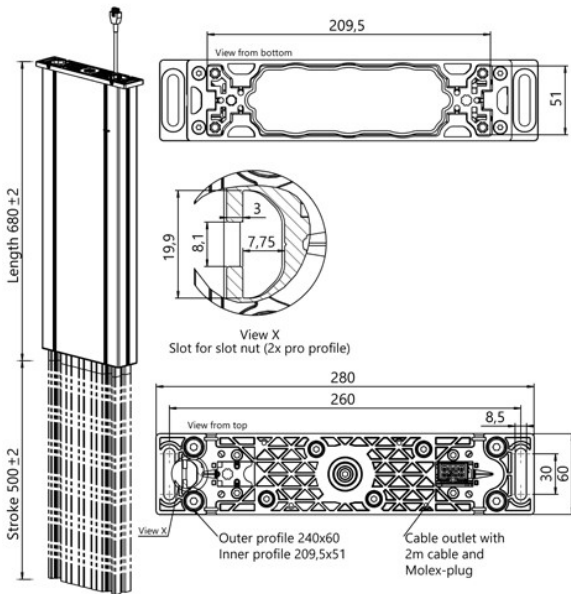
Actuator (HM240D400580)

\$470 (Distributor Stocking)

\$995 (Sample)

\$2280 (Full System Sample)

*Length/Stroke for priced item



| | HEXALIFT V1 | HEXALIFT V2 |
|------------------------------------|---------------------|--------------------|
| Push Force Max | 3200N | 2000N |
| Speed (without load) | 9mm/s | 18mm/s |
| Retracted Length (standard) | 530/*580/630/680 mm | 530/580/630/680 mm |
| Stroke (standard) | 350/*400/450/500 mm | 350/400/450/500 mm |
| Voltage | 24 VDC | 24 VDC |
| Cycle Duty (S3) | 1/9 (10%) min | 1/9 (10%) min |
| Integrated End Switches | Yes | Yes |

CONTROLLER SYNCONTROL (for up to 3 motors/lifters)



Control Box

\$170 Distributor Stocking
\$215 Sample

Hand switch with 4 memory positions and LCD display



Handset

\$60 Distributor Stocking
\$75 Sample

HS-SYC-LD6EC

| | |
|---------------------------------|---------------------|
| Mounting | Under desk mounting |
| Keys up/down | 2 |
| Memory | 4 positions |
| Display | 3 digit LCD |
| Cable Length | 1,7m |
| Useable with controllers | SYC2/SYC3 |