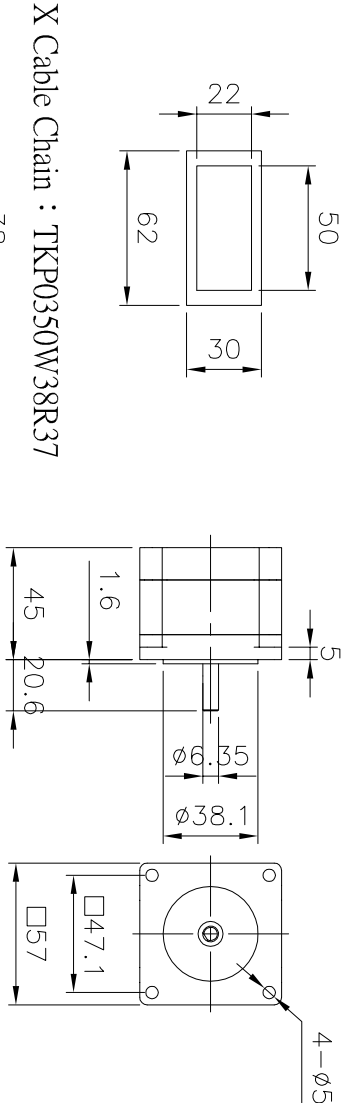
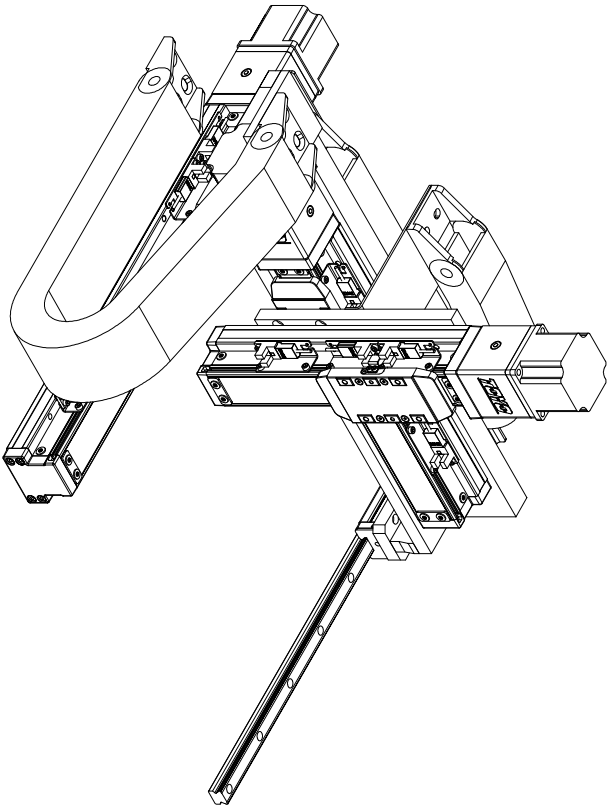
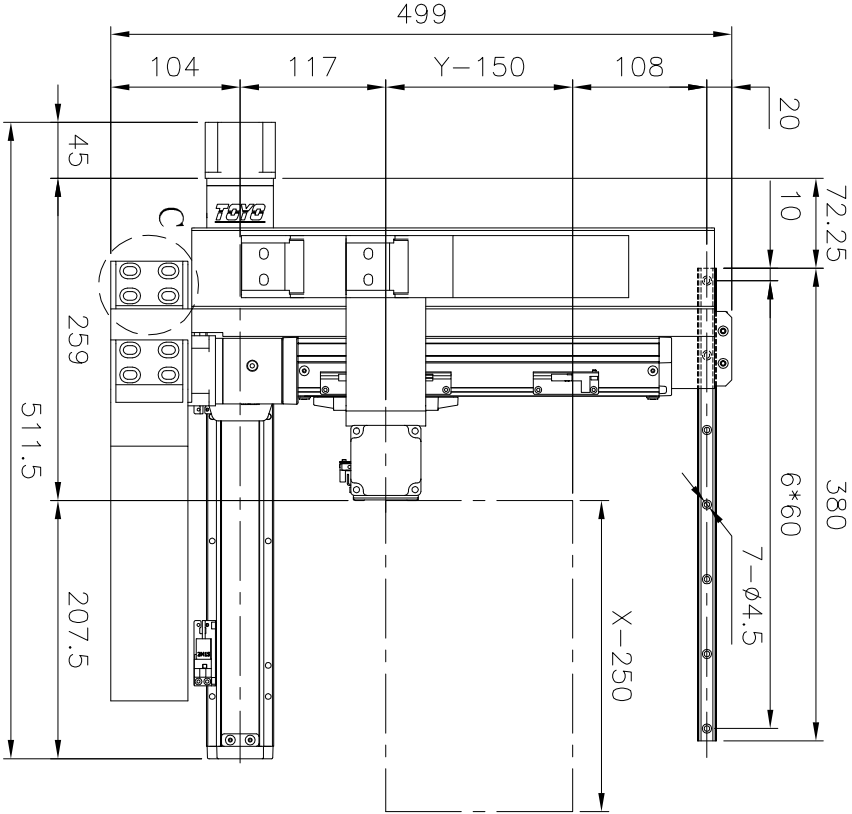


X Cable Chain : TKP0350W50R50 Schneide 57M step motor : M-2218-2.4S





X Cable Chain : TKP0350W38R37

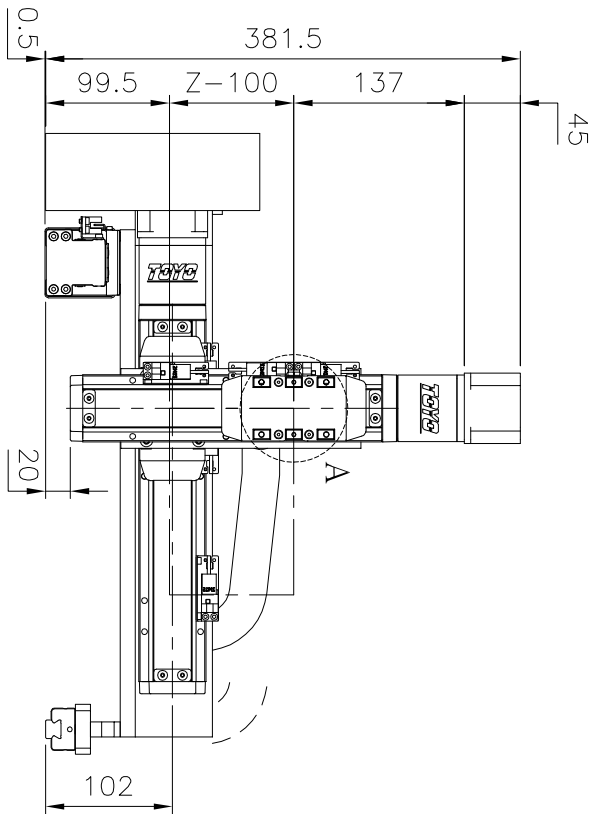


Specification after combined

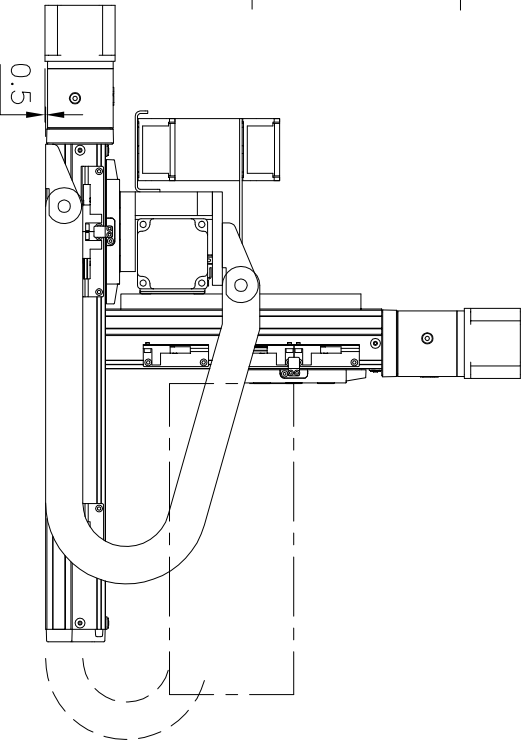
X	Model	XYGT222-G1-250-150-100-X-K-F506
	Designated motor model	GTH5-L10-250-BC-57M-C4-F506
	Motor shaft keyway	Schneide 57M step motor : M-2218-2.4S (Customer supply)
	Motor shaft keyway	None
	Sensor	3 units of EE-SX672 externally with 2m cable
	Max. motor speed	500rpm/min
	Max. linear speed	83.3mm/sec
	Acceration time taken to max. speed & deceration time taken from max. speed	300ms(0.3sec)
	Repeatability	±0.01mm
	Customization item	Motor non-standard(馬達特注)
Y	Model	GTH5-L10-150-BC-57M-C4-F506
	Designated motor model	Schneide 57M step motor : M-2218-2.4S (Customer supply)
	Motor shaft keyway	None
	Sensor	3 units of EE-SX672 externally with 2m cable
	Max. motor speed	500rpm/min
	Max. linear speed	83.3mm/sec
	Acceration time taken to max. speed & deceration time taken from max. speed	300ms(0.3sec)
	Repeatability	±0.01mm
	Customization item	Motor non-standard(馬達特注)
Z	Model	GTH5-L10-100-BC-57M-C4-F506
	Designated motor model	Schneide 57M step motor : M-2218-2.4S (Customer supply)
	Motor shaft keyway	None
	Sensor	3 units of EE-SX672 externally with 2m cable
	Max. motor speed	500rpm/min
	Max. linear speed	83.3mm/sec
	Acceration time taken to max. speed & deceration time taken from max. speed	300ms(0.3sec)
	Repeatability	±0.01mm
	Customization item	Motor non-standard(馬達特注)
	Z Axis Stroke payload	5 kg
	Customization item	Fallen prevent mechanical: customer provide. (客戶自行加裝防止落下機構) The fixing parts of X-Cable Chain will be fixed by client. (X軸履帶固定端,由客戶自行固定)

Product		Multi Axis Table		Specification			XYGT222-G1-250-150-100-X-K-F506				Item		Scale		Part number		Surface treatment		Heat treatment						
△	Modification	Date	Modified by	Surface Roughness	$G \frac{0.8S}{\sqrt{V}}$	$4 \frac{3.2S}{\sqrt{V}}$	$3 \frac{25S}{\sqrt{V}}$	$2 \frac{100S}{\sqrt{V}}$	$1 \frac{0}{\sqrt{V}}$																
1				General tolerance is not marked	1.Scale tolerance by vernier caliper ±0.5 when below 300 2.Pitch tolerance ±0.15					3.Square tolerance ±0.015															
2				Scale tolerance	±0.5 when below 300 ±0.7 when between 300~600 ±1.0 when between 600~1000					Unmarked chamfer : C0.5 Unmarked corner rounding : R0.5															
Path :														TOYO											
														Unit : mm						Design		Draw Mike 2017.12.06			

C

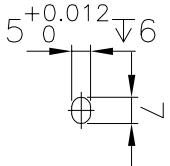


D



B view

A view



E

