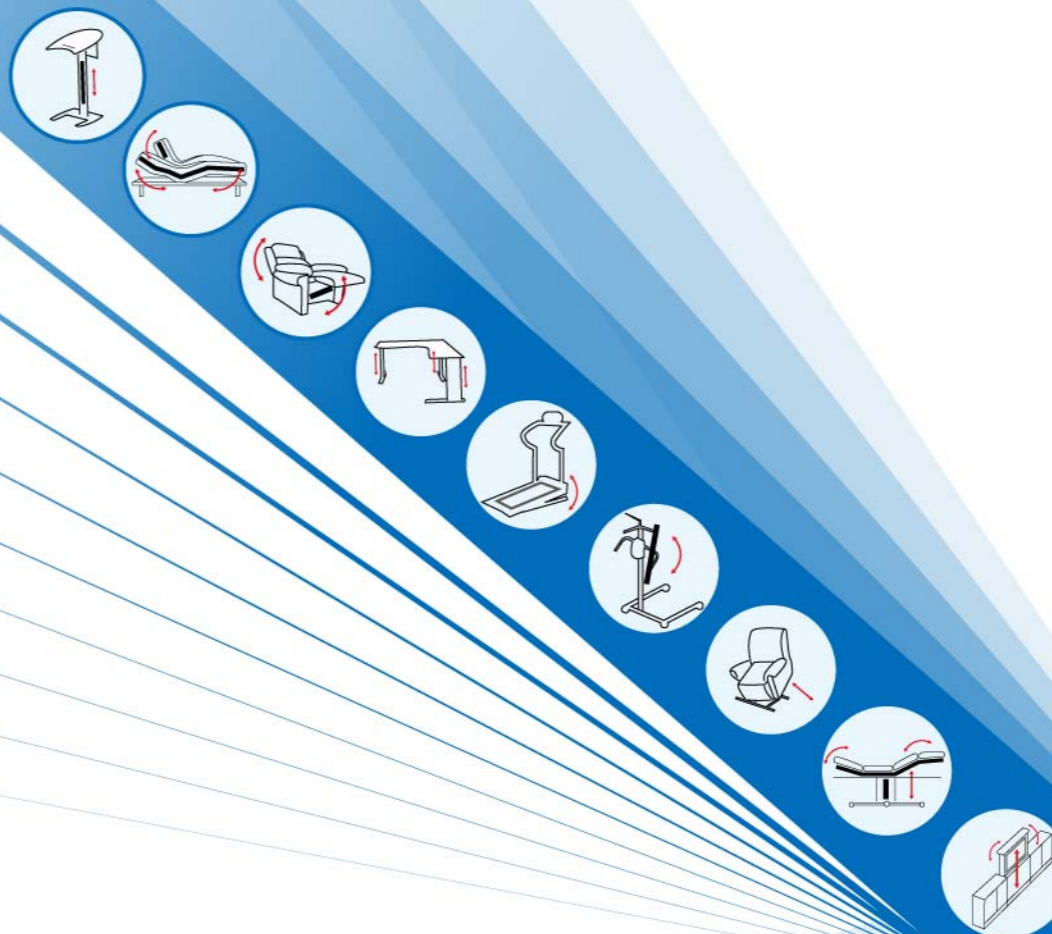


ACTUATOR / GEAR MOTOR / CONTROL

- ▶ Furniture Solution
- ▶ Medical Care Solution



MOTORIZED OUR WORLD



2013 GENERAL CATALOGUE

MOTORIZED OUR WORLD

MOTTECK®



1F-1, No.79, Sec.1 ,Xintai 5th Rd.,
Xizhi Dist., New Taipei City 22101,
Taiwan (R.O.C.)
Tel : +886-2-2698-1220
Fax: +886-2-2698-1324
sales@motteck.com.tw
www.motteck.com



MOTECK® is an ISO 9001:2008 certified manufacturer. Our products are CE, UL, DEKRA, KEMA, PSE and RoHS certified. We produce linear actuator, gear motor and control that are designed to provide automation solution for diversified applications. This catalogue is compiled for Furniture and Medical Care solutions.



Drive to a comfort pose

Our state-of-the-art technology enhances your ergonomic experiences. With our easily adjustable actuator, everyone is sure to find his/her right angle.

Take care of your needs

We provide reliable medical and home care applications to fit all the need of life style.

Open sesame

We design and custom-made almost all kinds of gate-opener with ready package and easy installation steps.

Turn to automation

Moving one step forward, experience our ever-powerful & efficient actuator application.

Enjoy your life

Whether the need is to stabilize the vehicle or to expand the space, we have got just the right solution for your customers.

Brightening your day

Our tracker MOTOSOLAR is compatible with almost all kinds of solar tracking system, it increases your energy performance.

Changing your vision

We are the forerunner of satellite dish actuator, and have been helping customers tracking satellite for decades.

Contents

03 / Linear Actuator
Furniture Solution

07 / Linear Actuator
Medical Care Solution

10 / Gear Motor
Furniture and Medical Care Solution

11 / Double Motor
Furniture Solution

13 / Control Box
Furniture and Medical Care Solution

18 / Handset
Furniture and Medical Care Solution

23 / Switch Panel
Furniture and Medical Care Solution

24 / TV Mount
Furniture Solution

25 / Accessory

Our Advantages are





FD60



FD60+T control box

Input: 12 / 24 / 110 VDC
 Max. Load: 6000 N(push) / 4000 N(pull)
 Speed: 4.2 mm/sec (no load)
 2.9 mm/sec (6000 N)
 Stroke: 50~300 mm
 Preset Limit Switches
 Duty Cycle: 10% (max. 2 min continuous on)
 Protection Rating: IP42
 Color: Black

| OPTION |

Speed: 3.1~44 mm/sec (no load)
 Hall Effect Sensor
 Push Only
 Manual Drive
 Color: Gray



FD20

Input: 24 / 12 VDC
 Max. Load: 2000 N(push) / 1000 N(pull)
 Speed: 8.4 mm/sec (no load)
 6.0 mm/sec (2000 N)
 Stroke: 30~250 mm
 Preset Limit Switches
 Duty Cycle: 10% (max. 2 min continuous on)
 Protection Rating: IP42
 Color: Black

| OPTION |

Speed: 4.2~22 mm/sec (no load)
 Hall Effect Sensor
 Push Only



GD70

Input: 24 / 12 VDC
 Max. Load: 7000 N(push) / 5000 N(pull)
 Speed: 4.2 mm/sec (no load)
 2.6 mm/sec (5000 N)
 Stroke: 50~300 mm
 Preset Limit Switches
 Duty Cycle: 10% (max. 2 min continuous on)
 Protection Rating: IP43
 Color: Black
 Lift Chairs Application

| OPTION |

Push Only



PD62

Input: 24 / 12 VDC
 Max. Load: 6000 N(push) / 4000 N(pull)
 Speed: 8.2 mm/sec (no load)
 5.5 mm/sec (6000 N)
 Stroke: 30~65 mm
 Preset Limit Switches
 Duty Cycle: 10% (max. 2 min continuous on)
 Protection Rating: IP43
 Color: Black

| OPTION |

Hall Effect Sensor
 Push Only



PD63

Input: 24 / 12 VDC
 Max. Load: 6000 N(push) / 4000 N(pull)
 Speed: 8.2 mm/sec (no load)
 5.5 mm/sec (6000 N)
 Stroke: 30~130 mm
 Preset Limit Switches
 Duty Cycle: 10% (max. 2 min continuous on)
 Protection Rating: IP43
 Color: Black

| OPTION |

Hall Effect Sensor
 Push Only



PD64

Input: 24 / 12 VDC
 Max. Load: 6000 N(push) / 4000 N(pull)
 Speed: 4.2 mm/sec (no load)
 2.6 mm/sec (6000 N)
 Stroke: 50~220 mm
 Preset Limit Switches
 Duty Cycle: 10% (max. 2 min continuous on)
 Protection Rating: IP43
 Color: Black
 Lift Chairs Application

| OPTION |

Hall Effect Sensor
 Push Only

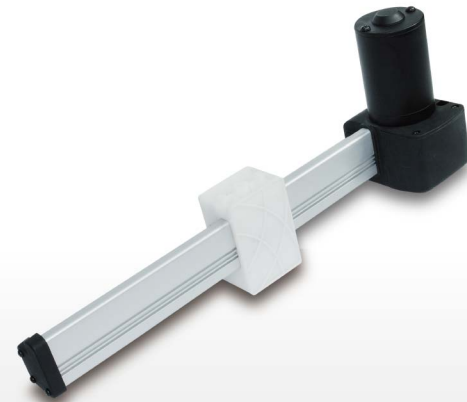


BD60

Input: 24 / 12 VDC
 Max. Load: 6000 N(push) / 4000 N(pull)
 Speed: 4.2 mm/sec (no load)
 2.9 mm/sec (6000 N)
 Stroke: 100~800 mm
 Adjustable Limit Switches
 Duty Cycle: 10% (max. 2 min continuous on)
 Color: Black

| OPTION |

Speed: 3.1~44 mm/sec (no load)
 Hall Effect Sensor



BD61

Input: 24 / 12 VDC
 Max. Load: 6000 N(push) / 4000 N(pull)
 Speed: 4.2 mm/sec (no load)
 2.9 mm/sec (6000 N)
 Stroke: 100~800 mm
 Adjustable Limit Switches
 Duty Cycle: 10% (max. 2 min continuous on)
 Color: Black
 Stronger Outer Tube

| OPTION |

Speed: 3.1~44 mm/sec (no load)
 Hall Effect Sensor



LD2Q

Input: 24 / 12 VDC
 Max. Load: 800 N
 Speed: 10 mm/sec (no load)
 Stroke: 50~300 mm
 Preset Limit Switches
 Duty Cycle: 25% (max. 2 min continuous on)
 Protection Rating: IP43

| OPTION |

Hall Effect Sensor
 Protection Rating: IP54



LD10

Input: 24 / 12 VDC
 Max. Load: 1000 N
 Speed: 22 mm/sec (no load)
 11 mm/sec (1000 N)
 Stroke: 50~350 mm
 Preset Limit Switches
 Duty Cycle: 10% (max. 2 min continuous on)
 Protection Rating: IP42
 Inline Design

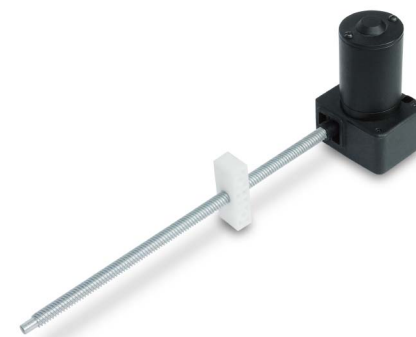


BDF60

Input: 24 / 12 VDC
 Max. Load: 6000 N(push) / 4000 N(pull)
 Speed: 4.2 mm/sec (no load)
 2.9 mm/sec (6000 N)
 Stroke: 50~300 mm
 Adjustable Limit Switches
 Duty Cycle: 10% (max. 2 min continuous on)
 Protection Rating: IP42
 Color: Black

| OPTION |

Speed: 3.1~44 mm/sec (no load)
 Hall Effect Sensor
 Push Only



BDN60

Input: 24 / 12 VDC
 Max. Load: 6000 N(push) / 4000 N(pull)
 Speed: 4.2 mm/sec (no load)
 2.9 mm/sec (6000 N)
 Stroke: 100~800 mm
 Adjustable Limit Switches
 Duty Cycle: 10% (max. 2 min continuous on)
 Color: Black

| OPTION |

Speed: 3.1~44 mm/sec (no load)
 Hall Effect Sensor



Standard



Potentiometer



Hall Effect

LD3Q

Input: 24 / 12 VDC
 Max. Load: 800 N
 Speed: 6 mm/sec (no load)
 Stroke: 50~300 mm
 Preset Limit Switches
 Duty Cycle: 25% (max. 2 min continuous on)
 Protection Rating: IP54

| OPTION |

Hall Effect Sensor
 Potentiometer
 Protection Rating: IP65
 Clamp



Clamp

MD50



Input: 24 / 12 VDC
 Max. Load: 3500 N(push) / 2000 N(pull)
 Speed: 5.0 mm/sec (no load)
 3.9 mm/sec (3500 N)
 Stroke: 100~600 mm
 Preset Limit Switches
 Duty Cycle: 10% (max. 2 min continuous on)
 Color: Black

| OPTION |

Max. Load: 2000N (Push/Pull)
 Speed: 11 mm/sec (no load)
 Push Only

MD66



Input: 24 / 12 VDC
 Max. Load: 6000N (push) / 4000N (pull)
 Speed: 4.2mm/sec (no load)
 2.9mm/sec (6000N)
 Stroke: 60~300 mm
 Preset Limit Switches
 Duty Cycle: 10% (max. 2 min continuous on)
 Protection Rating: IPX4
 Color: Light Gray (RAL 7035)

| OPTION |

Speed: 3.1~44 mm/sec (no load)
 Hall Effect Sensor
 Push Only
 Safety Nut
 Quick Release
 Protection Rating: IPX5

MD51

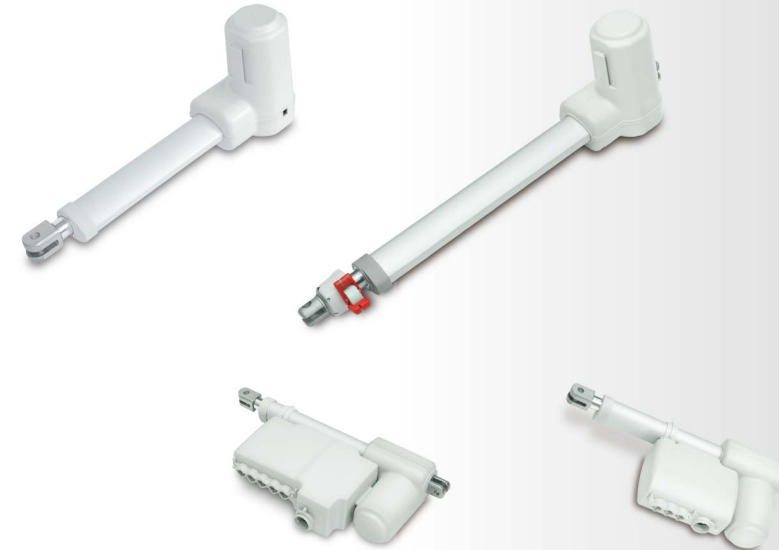


Input: 24 / 12 VDC
 Max. Load: 3500 N(push) / 2000 N(pull)
 Speed: 5.0 mm/sec (no load)
 3.9 mm/sec (3500 N)
 Stroke: 100~600 mm
 Preset Limit Switches
 Duty Cycle: 10% (max. 2 min continuous on)
 Protection Rating: IPX4
 Color: Black

| OPTION |

Max. Load: 2000N (Push/Pull)
 Speed: 11 mm/sec (no load)
 Push Only
 Protection Rating: IPX6

MD60



Input: 24 / 12 VDC
 Max. Load: 6000N (push) / 4000N (pull)
 Speed: 4.2 mm/sec (no load)
 2.9 mm/sec (6000N)
 Stroke: 60~300 mm
 Preset Limit Switches
 Duty Cycle: 10% (max. 2 min continuous on)
 Protection Rating: IP54
 Color: Light Gray (RAL 7035)

| OPTION |

Speed: 3.1~22 mm/sec (no load)
 Hall Effect Sensor
 Push Only
 Safety Nut
 Quick Release
 Manual Release
 Protection Rating: IPX5 / IPX6

MD60+MD6C control box

MD60+CB2P control box

MD52



Input: 24 / 12 VDC
 Max. Load: 1000 N(push) / 1000 N(pull)
 Speed: 27 mm/sec (no load)
 19 mm/sec (1000 N)
 Stroke: 50~300 mm
 Potentiometer
 Duty Cycle: 10% (max. 2 min continuous on)
 Protection Rating: IPX6
 Color: Black

| OPTION |

Bellow Protection
 Protection Rating: IP69K

MD7



Input: 24 / 12 VDC
 Max. Load: 6000 N(push) / 4000 N(pull)
 Speed: 4.2 mm/sec (no load)
 2.9 mm/sec (6000 N)
 Stroke: 50~300 mm
 Preset Limit Switches
 Duty Cycle: 10% (max. 2 min continuous on)
 Protection Rating: IP54
 Color: Light Gray (RAL 7035)

| OPTION |

Speed: 3.1~44 mm/sec (no load)
 Hall Effect Sensor
 Push Only
 Safety Nut

MD7+MD7C control box

MD7+CB2P control box

MD53



Input: 36 VDC
 Max. Load: 3500 N(push) / 2000 N(pull)
 Speed: 10 mm/sec (no load)
 8.5 mm/sec (3500 N)
 Stroke: 50~300 mm
 Adjustable Limit Switches
 Duty Cycle: 10% (max. 2 min continuous on)
 Potentiometer
 Color: Black



MD80M

Input: 120 / 230 VAC
 Integrated Control Unit Drives up to 3 Actuators
 Motor Voltage: 24 VDC
 Max. Load: 8000 N(push) / 6000 N(pull)
 Speed: 8.2 mm/sec (no load)
 5.8 mm/sec (8000 N)
 Stroke: 60~300 mm
 Preset Limit Switches
 Duty Cycle: 10% (max. 2 min continuous on)
 Protection Rating: IPX4
 Color: Light Gray (RAL 7035)

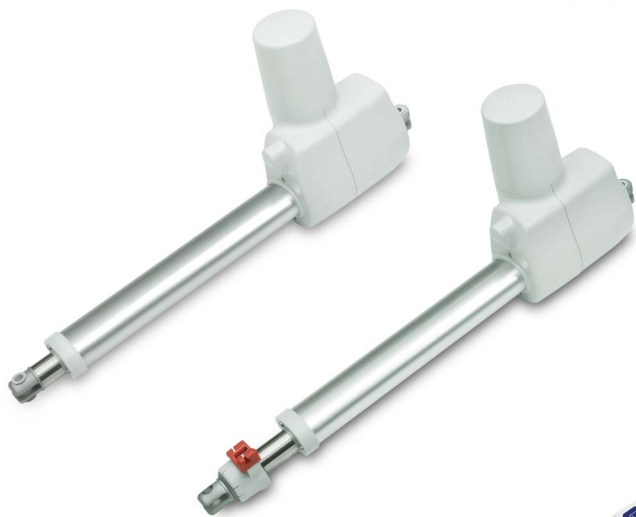
| OPTION |
 Speed: 6.2~16 mm/sec (no load)
 Push Only
 Safety Nut
 Manual Release
 Protection Rating: IPX5/ IPX6



MD80S

Max. Load: 8000N (push) / 6000N (pull)
 Motor Voltage: 24V DC
 Speed: 8.2 mm/sec (no load)
 5.8 mm/sec (8000N)
 Stroke: 60~300 mm
 Preset Limit Switches
 Duty Cycle: 10% (max. 2 min continuous on)
 Protection Rating: IPX4
 Color: Light Gray (RAL 7035)

| OPTION |
 Speed: 6.2~16 mm/sec (no load)
 Push Only
 Safety Nut
 Manual Release
 Protection Rating: IPX5 / IPX6



MD100

Input: 24 VDC
 Max. Load: 10000N (push) / 6000N (pull)
 Speed: 6.9 mm/sec (no load)
 4.9 mm/sec (10000N)
 Stroke: 100~600 mm
 Preset Limit Switches
 Duty Cycle: 10% (max. 2 min continuous on)
 Protection Rating: IPX4
 Color: Light Gray (RAL 7035)

| OPTION |
 Speed: 9.5 mm/sec (no load)
 Push Only
 Quick Release
 Manual Drive
 Protection Rating: IPX6

CBP2 control box



HT Handset



MG-H1

Right Angle Gear Motor
 Input: 12 VDC
 Max. Torque: 6.7 Nm
 Max. Speed: 108 RPM
 Max. Current: 30A
 Gear Ratio: 30:1
 Duty Cycle: 25%
 (max. 2 min continuous on)



MG-H3

Right Angle Gear Motor
 Input: 12 VDC
 Max. Torque: 11.3 Nm
 Max. Speed: 47 RPM
 Max. Current: 30A
 Gear Ratio: 61:1
 Duty Cycle: 25%
 (max. 2 min continuous on)



MG-H4

Right Angle Gear Motor
 Input: 12 VDC
 Max. Torque: 9.2 Nm
 Max. Speed: 65 RPM
 Max. Current: 30A
 Gear Ratio: 51:1
 Duty Cycle: 25%
 (max. 2 min continuous on)



MG-W1

Right Angle Gear Motor (Right Side)
 Input: 24/12 VDC
 Max. Torque: 2 Nm
 Max. Speed: 68 RPM
 Max. Current: 6A/3A (24V)
 Gear Ratio: 56:1
 Duty Cycle: 10%
 (max. 2 min continuous on)



MG-W2

Left Angle Gear Motor (Left Side)
 Input: 24/12 VDC
 Max. Torque: 2 Nm
 Max. Speed: 90 RPM
 Max. Current: 6A/3A (24V)
 Gear Ratio: 53:1
 Duty Cycle: 10%
 (max. 2 min continuous on)



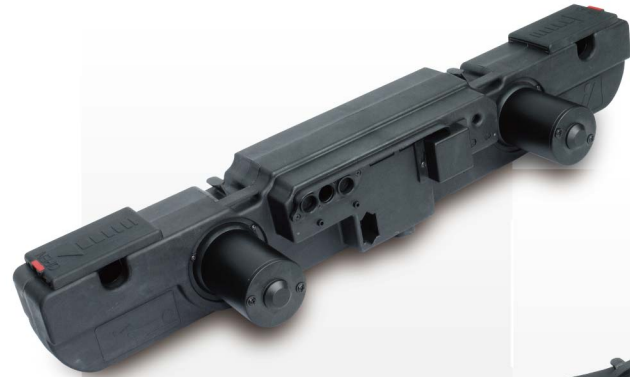
MG-W4

Hi-Low Motor
 Input: 24/12 VDC
 Max. Torque: 2 Nm
 Max. Speed: 90 RPM
 Max. Current: 6A (24V)
 Gear Ratio: 53:1
 Duty Cycle: 10%
 (max. 2 min continuous on)
 Protection Rating: IPX4
 Color: Light Gray (RAL 7035)



MG-W8

Hi-Low Motor
 Input: 24 VDC
 Max. Torque: 12 Nm
 Max. Speed: 65 RPM
 Max. Current: 6A
 Gear Ratio: 51:1
 Duty Cycle: 10%
 (max. 2 min continuous on)
 Color: Light Gray (RAL 7035)



TW40 / TW60

Input: 100/120/230 VAC
 Max. Load: 2*4500N (TW40)
 Max. Speed: 5 mm/sec
 Stroke: 87 mm (Back) / 69 mm (Legs)
 (Other Strokes Available)
 Emergency Lowering Function by 2*9V Batt.
 Duty Cycle: 10% (max. 2 min continuous on)
 Protection Rating: IP20
 Color: Black
 Patented

| OPTION |

Max. Load: 2*6000N (TW60)
 Additional 1~2 Actuators
 Safety Plug (Mains Cut-off)
 Memory Function
 Wired Handset / RF Handset / IR Handset
 Protection Rating: IPX4
 Color: Light Gray (RAL 7035)



TW41 / TW61

Input: 100/120/230 VAC
 Max. Load: 2*4500N (TW41)
 Max. Speed: 5 mm/sec
 Stroke: 87 mm (Back) / 69 mm (Legs)
 (Other Strokes Available)
 Emergency Lowering Function by 2*9V Batt.
 Duty Cycle: 10% (max. 2 min continuous on)
 Protection Rating: IP20
 Patented

| OPTION |

Max. Load: 2*6000N (TW61)
 External Switching Power Supply
 Internal Switching Power Supply
 Additional 1~2 Actuators or Massage Motors
 Safety Plug (Mains Cut-off)
 Memory Function
 Wired Handset / RF Handset / IR Handset
 Protection Rating: IPX4
 Color: Light Gray (RAL 7035)



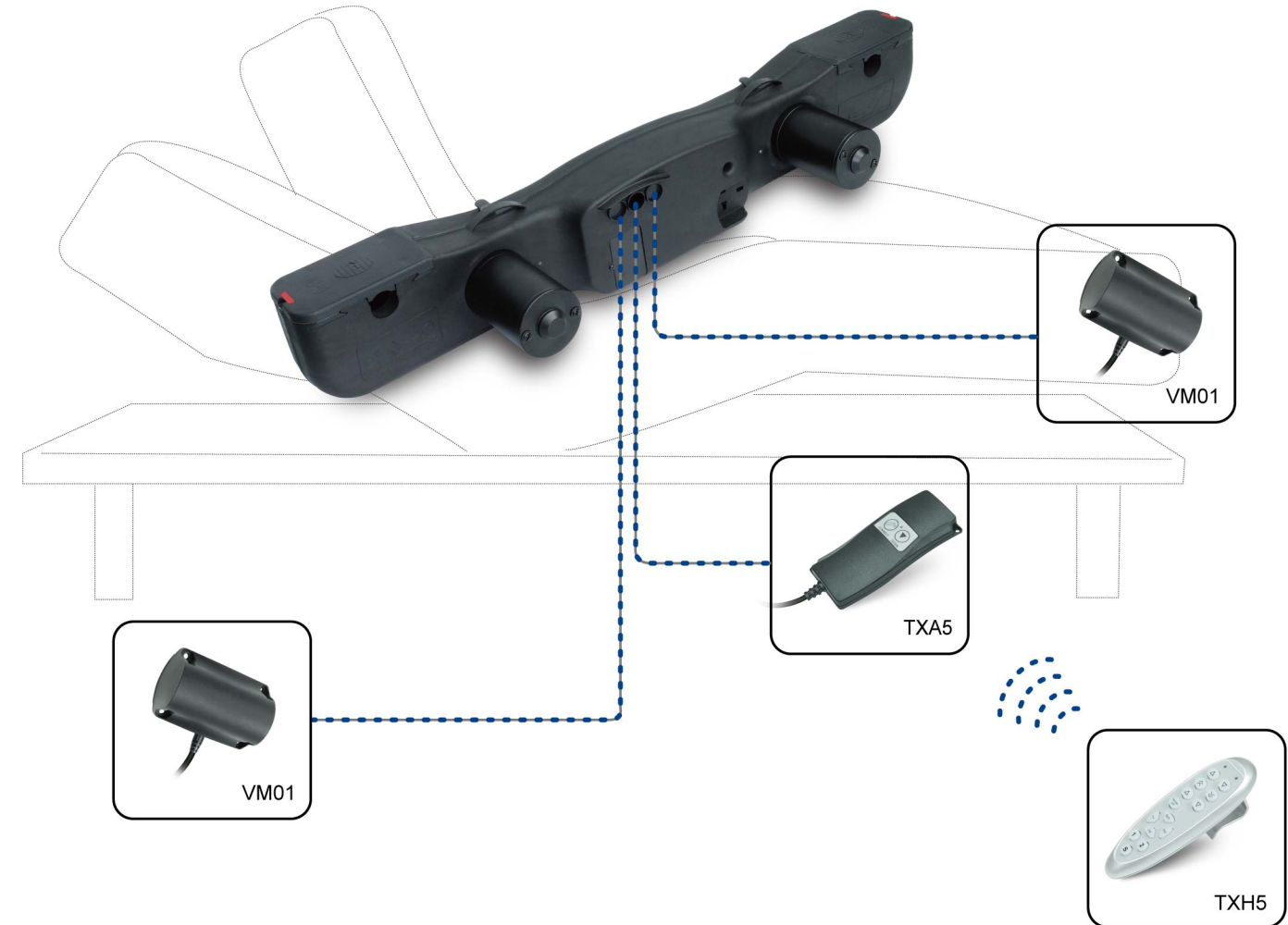
TW32

Input: 100/120/230 VAC
 Max. Load: 2*3500N
 Max. Speed: 5 mm/sec
 Stroke: 87 mm (Back) / 69 mm (Legs)
 (Other Strokes Available)
 Emergency Lowering Function by 2*9V Batt.
 Duty Cycle: 10% (max. 2 min continuous on)
 Protection Rating: IP20
 Patented

| OPTION |

Wired Handset / RF Handset / IR Handset
 Protection Rating: IPX4

| Connection Diagram |



| Accessory |

TSW1



External SMPS

TSW2



External SMPS
 Emergency Lowering Function by 2*9V Batt.

SP4



Safety Plug (Wall Plug type)

SP5

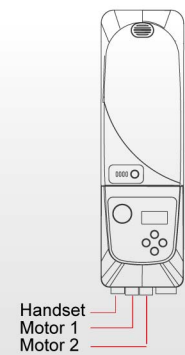


Safety Plug (Power Cord type)

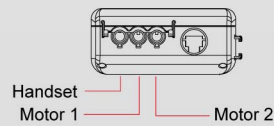
Control Box

Multiple Applications

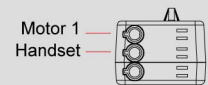
Suggested Control Boxes for up to 4 Actuators.



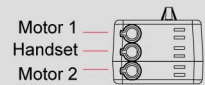
CBP2



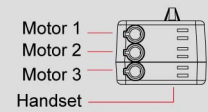
CB2P



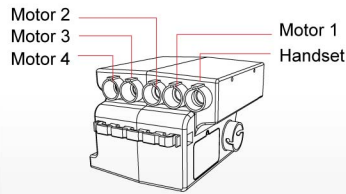
T control box



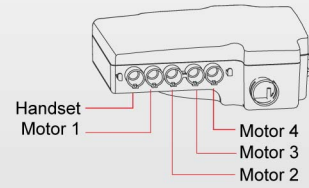
T control box



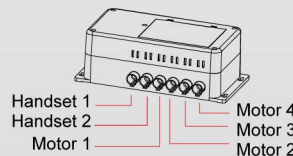
T control box



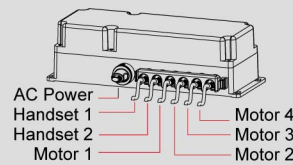
MD7C



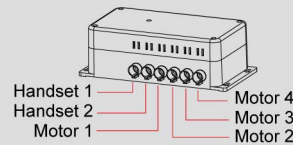
MD6C



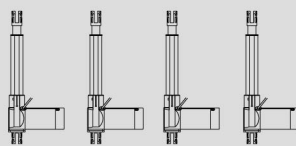
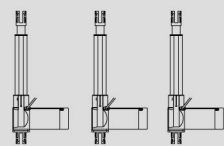
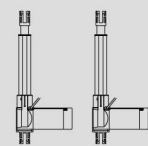
CB4G



CB4P



CB4M



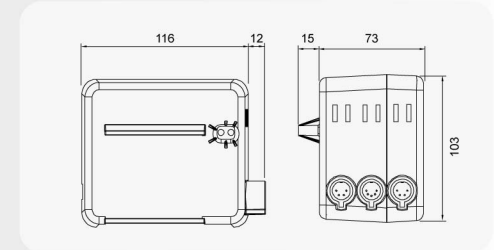
T Control



A Compact Control Box that can be attached to FD Actuator
 Input: 100 / 120 / 230 VAC, 60 / 50 Hz
 Output: 24 / 12 VDC @ 3 / 6 A Max.
 Drive up to 3 Actuators
 Emergency Lowering Function by 2*9V Batt.
 Duty Cycle: 10% (max. 2 min continuous on)
 Overload Protection

OPTION

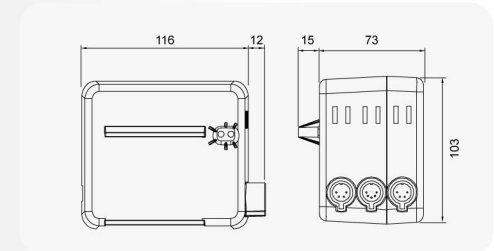
- Safety Plug
- Support NC type Safety Strip



TR11



A Compact Control Box that can be attached to FD Actuator
 Infrared Sensor avoids Body Injury
 Input: 100 / 120 / 230 VAC, 60 / 50 Hz
 Output: 24 / 12 VDC @ 3 / 6 A Max.
 Drive only 1 Actuator
 Emergency Lowering Function by 2*9V Batt.
 Duty Cycle: 10% (max. 2 min continuous on)
 Overload Protection
 Safety Plug



TL01



A Pair of Linked Control Boxes that can be Controlled Simultaneously by a Handset
 Input: 100 / 120 / 230 VAC, 60 / 50 Hz
 Output: 24 / 12 VDC @ 3 / 6 A Max.
 Drive up to 4 Actuators
 Max. 2 Handsets
 Emergency Lowering Function by 2*9V Batt.
 Duty Cycle: 10% (max. 2 min continuous on)
 Overload Protection

OPTION

- Safety Plug

Control Box

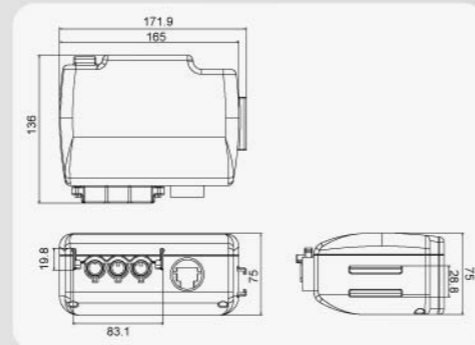
CB2P



Input: 100 / 120 / 230 VAC, 60 / 50 Hz
 Output: 24 / 12 VDC @ 3 / 6 A max.
 Drive up to 2 Actuators
 Emergency Lowering Function by 2*9V Batt.
 Duty Cycle: 10% (max. 2 min continuous on)
 Overload Protection
 Protection Rating: IPX4
 Color: Light Gray (RAL 7035)

| OPTION |

Mounting Clip for MD7 / MD60 / MD66 Actuators
 Protection Rating: IPX5



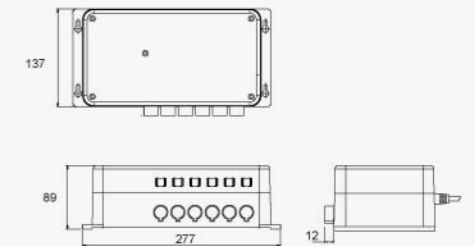
CB4M



Input: 100 / 120 / 230V AC, 60 / 50Hz
 Output: 24 VDC @ 3A max.
 Drive up to 4 Actuators
 Max. 2 Handsets
 Duty Cycle: 10% (max. 2 min continuous on)
 Overload Protection

| OPTION |

Synchronization for 2 Actuators
 High Power, Output: 24 VDC @ 6.5 A Max.
 Rechargeable backup Batt. (1.3Ah, 2*12V)
 Position Memory Function



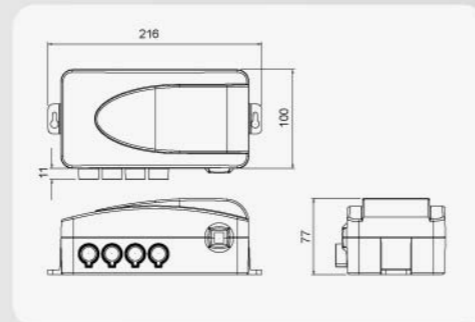
CB3T



Input: 100 / 120 / 230 VAC, 60 / 50 Hz
 Output: 24 / 12 VDC @ 3 / 6 A max.
 Drive up to 3 Actuators
 Duty Cycle: 10% (max. 2 min continuous on)
 Overload Protection

| OPTION |

Synchronization of 2 Actuators
 High Power, Output: 24 / 12 VDC @ 4.5 / 9 Amp max.
 Safety Plug



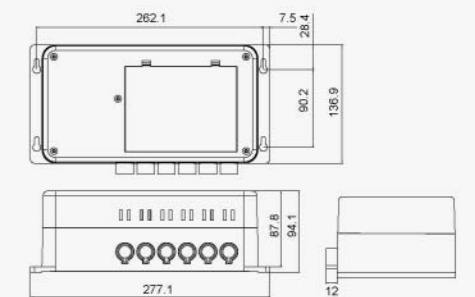
CB4G



Input: 100 / 120 / 230 VAC, 60 / 50Hz
 Output: 24 VDC @ 3 A max.
 Drive up to 4 Actuators
 Max. 2 Handsets
 Position Memory Function
 Support Lamp Dimmer Control
 Bed-flat Function
 Emergency Lowering Function by 2*9V Batt.
 Duty Cycle: 10% (max. 2 min continuous on)
 Overload Protection

| OPTION |

Safety Plug



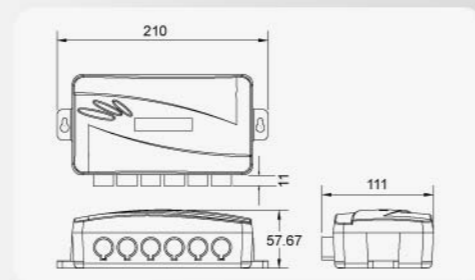
TSC



A Control Box with Reduced Size
 Input: 24 VDC
 Output: 24 VDC
 Drive up to 3 Actuators
 Duty Cycle: 10% (max. 2 min continuous on)

| OPTION |

Power Supply: TSE / TST / TSW1 / TSW2



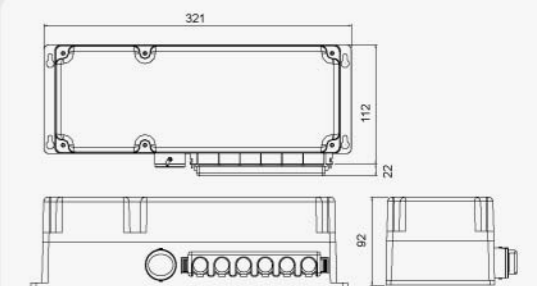
CB4P



Input: 100 / 120 / 230 VAC, 60 / 50Hz
 Output: 24 VDC @ 6 A max.
 Drive up to 4 Actuators
 Max. 2 Handsets
 Protection Rating: IPX4
 Duty Cycle: 10% (max. 2 min continuous on)
 Overload Protection
 Color: Light Gray (RAL 7035)

| OPTION |

Synchronization for 2 Actuators
 Rechargeable backup Batt. (1.3Ah, 2*12V)
 Position Memory Function
 High Power Version (CB4P-HP)



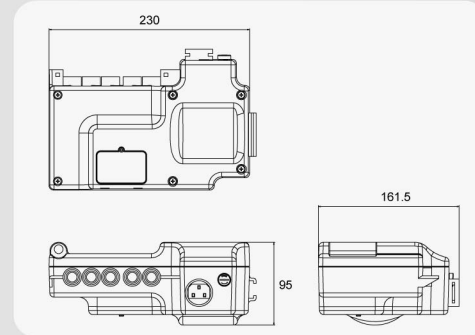
MD6C



A Control Box that can be attached to MD7 / MD60 / MD66 Actuators
 Input: 100 / 120 / 230 VAC, 60 / 50Hz
 Output: 24 VDC @ 6.5 A max.
 Drive up to 4 Actuators
 Emergency Lowering Function by 2*9V Batt.
 Duty Cycle: 10% (max. 2 min continuous on)
 Protection Rating: IPX4
 Color: Light Gray (RAL 7035)

| OPTION |

Mounting Clip for MD7 / MD60 / MD66 Actuators
 Protection Rating: IPX5 / IPX6



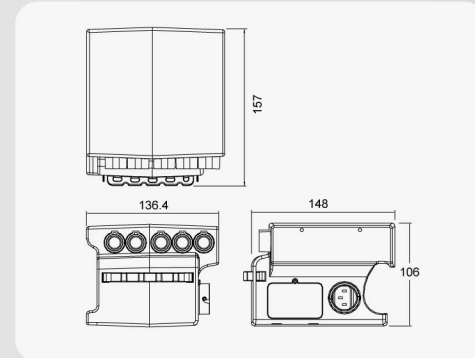
MD7C



A Control Box that can be attached to MD7 Actuator
 Input: 100 / 120 / 230 VAC, 60 / 50 Hz
 Output: 24 VDC @ 3 A max.
 Drive up to 4 Actuators
 Emergency Lowering Function by 2*9V Batt.
 Duty Cycle: 10% (max. 2 min continuous on)
 Protection Rating: IPX4
 Color: Light Gray (RAL 7035)

| OPTION |

High Voltage Output
 Protection Rating: IPX5



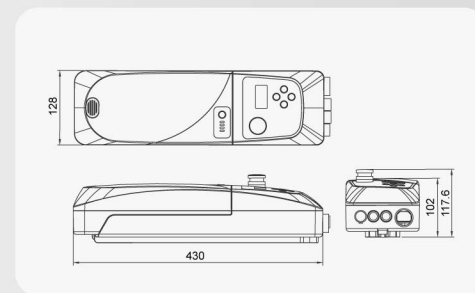
CBP2



Control Box for Patient Lift
 Input: 120 / 230 VAC, 60 / 50Hz
 Output: 24 VDC, (5Ah 2*12V)
 Drive up to 2 Actuators
 Pulling-proof AC Plug
 Adjustable Overload Protection
 Actuator's Over-duty Alarm on LCD
 Emergency Stop Button
 Control Panel with max. 4 Buttons
 Charging Function
 Battery Capacity on LCD Display
 Low Battery Alarm
 Duty Cycle: 10% (max. 2 min continuous on)
 Protection Rating: IPX5
 Color: Light Gray (RAL 7035)

| OPTION |

Battery Capacity Indicator on Battery Pack
 Soft Start and Stop for Lifting Actuator
 Stand-alone Charger (CHP1)
 Additional Battery Pack (BTP1)



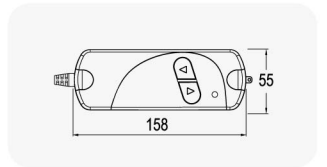
HA



Max. Buttons: 2
 Max. Actuators: 1
 Color: Black
 LED Indicator
 With Hook

| OPTION |

Safety key



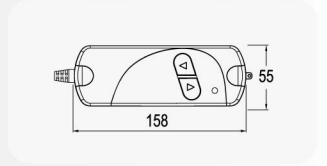
HB



HB Handset works with Transformer Box or SMPS
 Max. Buttons: 2
 Max. Actuators: 1
 Color: Black
 LED Indicator
 With Hook

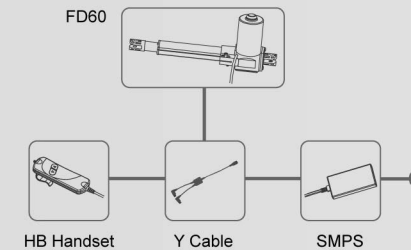
| OPTION |

Safety key

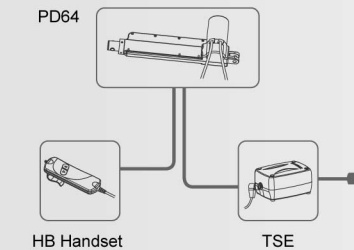


Connection Examples:

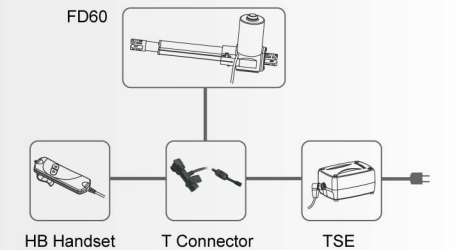
< I >



< II >



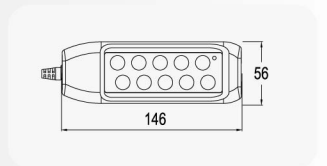
< III >



HC



Max. Buttons: 10
 Max. Actuators: 4
 Color: Light Gray (RAL 7035)
 LED Indicator
 With Hook



Handset

H2D



Max. Buttons: 12
Max. Actuators: 3
Color: Light Gray (RAL 7035)
LED Indicator
Protection Rating: IPX4
With Hook

| OPTION |
Nurse Lock

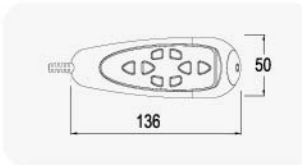


HI



Max. Buttons: 9
Max. Actuators: 3
Color: Silver
With Hook

| OPTION |
LED Indicator
Safety key

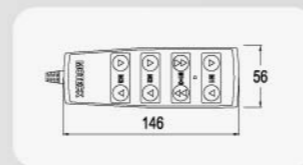


HD



Max. Buttons: 8
Max. Actuators: 3
Color: Black
LED Indicator
With Hook

| OPTION |
Color: Light Gray (RAL 7035)

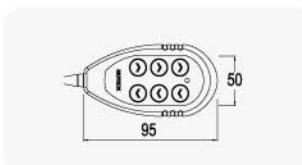


HJ



Max. Buttons: 6
Max. Actuators: 3
Color: Black
LED Indicator
With Hook

| OPTION |
Magnetic Hook

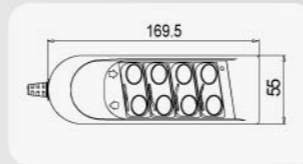


H3F



Max. Buttons: 8
Max. Actuators: 3
Color: Dark Gray (Pantone 446C)
Back-Light
Protection Rating: IPX4
With Hook

| OPTION |
Protection Rating: IPX6

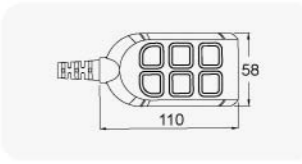


HK



Max. Buttons: 6
Max. Actuators: 3
Color: Light Gray (RAL 7035)
Protection Rating: IPX6
Round Hook

| OPTION |

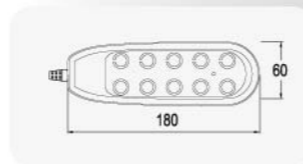


HF



Max. Buttons: 10
Max. Actuators: 4
Color: Light Gray (RAL 7035)
LED Indicator
Protection Rating: IPX4
With Hook

| OPTION |
Safety key

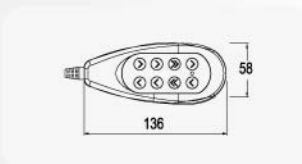


HM



Max. Buttons: 8
Max. Actuators: 4
Color: Black
LED Indicator
With Hook

| OPTION |
Color: Light Gray (RAL 7035)
Safety key



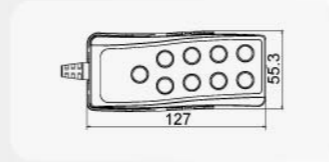
Handset

H2N

Max. Buttons: 9
Max. Actuators: 4
Color: Black
LED Torch
Holder with Hook

| OPTION |

Holder without Hook



**TI Series
IR Remote Kit**

IR Remote Control Unit
Remote Range: 10m max.
Max. Buttons: 9
Max. Actuators: 3
Color: Light Gray (RAL 7035)
LED Indicator
Hook on Handset
Button Lock
Unique ID Code

| OPTION |

Supports External Connection to Safety Switch or Stripe
Supports External Power Adapter



TITX
(IR Remote Handset)

TICB
(Adapter)

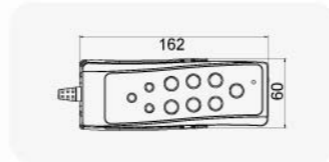
TIRX
(IR External Sensor)

H3N

Max. Buttons: 10
Max. Actuators: 2
Color: Black
LED Torch
Holder with Hook

| OPTION |

Holder without Hook



**TX Series
RF Remote Kit**

2.4GHz RF Remote Control Unit
Remote Range: 8m max.
Max. Buttons: 11
Max. Actuators: 4
Color: Silver (TXH)
Black (TXA)
LED Indicator
Hook on Handset
Button Lock
Unique ID Code
All-down Function

| OPTION |

Positions Memory Depending on Control Box



TXH (Handset)

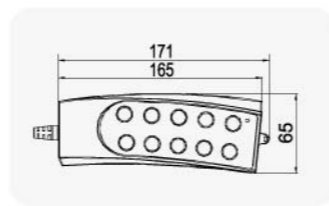
TXA (Adapter)

HT

Max. Buttons: 10
Max. Actuators: 4
Color: Light Gray (RAL 7035)
LED Indicator
Protection Rating: IPX4
With Hook

| OPTION |

Safety Key
Nurse Lock
Protection Rating: IPX5



**TXT Series
RF Remote Kit**

2.4GHz RF Remote Control Unit
Remote Range: 8m max.
Max. Buttons: 10
Max. Actuators: 2
Color: Black
LED Torch
Hook on Handset
Unique ID Code
All-down Function

| OPTION |

Positions Memory Depending on Control Box

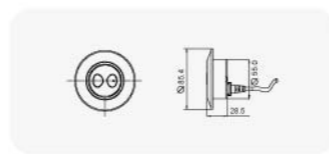


TXT (Handset)

TXA (Adapter)

HR

Max. Buttons: 2
Max. Actuators: 1
Color: Black
Mounted into the Recliner Directly.



Switch Panel

**KL1
Desk Panel**

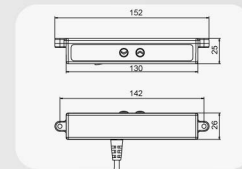
Max. Buttons: 7
Max. Actuators: 1
Position memory function according to control box

| OPTION |
LED display



**HDU
Control Panel**

Max. Buttons: 6
Max. Actuators: 3
Color: Light Gray (RAL 7035)



**FS1
Foot Switch**

Max. Actuators: 1
Color: Light Gray (RAL 7035)
Protection Rating: IPX4

| OPTION |
Protection Rating: IPX6



**NL1
Nurse Lock**

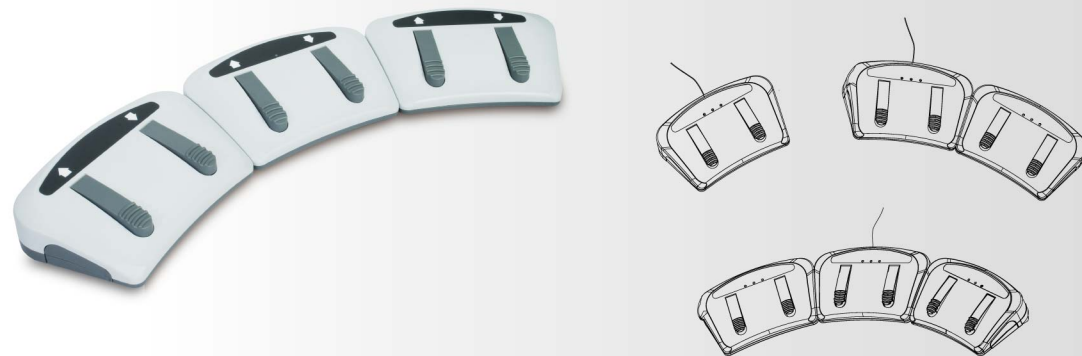
Lockable for max. 3 Actuators
Manual Buttons: 2
Color: Light Gray (RAL 7035)



**FS2
Foot Switch II**

Max. Actuators: 3
Color: Light Gray (RAL 7035)
LED Indicator
Protection Rating: IPX4

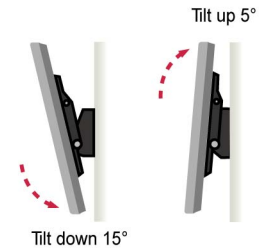
| OPTION |
Protection Rating: IPX6



TV Mount

TVM1

Motorized TV Mount
Suitable for 42" ~ 62" flat TV
Max. Weight: 60 KG
Input: 115 / 230 VAC
Dimension: 880 (W) x 530 (H) mm
With RF Remote Control (433.92 MHz)



TVM2

Motorized TV Mount
Suitable for Max. 60" TV
Max. Load: 60 KG
Input: 115 / 230 VAC
Max. Speed: 30 mm/sec
Stroke: 610 / 780 / 914 mm
RF Remote Control (2.4GHz)
Remote Range: 7m max.
Wired Handset
2 Memory Positions



Control Box



Wired Handset



Remote

TVM3

Motorized TV Mount
Suitable for Max. 42" TV
Max. Load: 60 KG
Input: 115 / 230V AC
Max. Speed: 22 mm/sec
Stroke: 680 mm
RF Remote Control (2.4GHz)
Remote Range: 7m max.
Wired Handset
2 Memory Positions



Control Box



Wired Handset



Remote

TV Brackets

Suitable for flat TV 10"-37"
Max. Load: 27 KG



TVB1



TVB2



TVB3

Accessory

TSE



A Separate Transformer Box
 Input: 100 / 120 / 230 VAC, 60/50 Hz
 Output: 24 / 12 VDC @ 3 / 6 A max.
 Emergency Lowering Function by 2*9V Batt.
 Color: Black
 Duty Cycle: 10% (max. 2 min continuous on)

AC Lock Box



Power off when Key is Unplugged
 Input: 120 / 230 VAC
 Max. Switch Capacity: 414 VA
 Green LED when AC in
 Color: Light Gray (RAL 7035)
 Protection Rating: IPX5
 Plug Type: EU / US / UK

TST



A Separate Transformer Box
 Input: 100 / 120 / 230 VAC, 60/50 Hz
 Output: 24 / 12 VDC @ 6 / 12 A max.
 Color: Black
 Duty Cycle: 10% (max. 2 min continuous on)

TSW1



Switching Mode Power Supply
 Input: 100 ~ 240 VAC, 60/50 Hz
 Output: 29 VDC
 Rated Current: 2.0 A
 Output Over Voltage Protection
 Input / Output Over Current Protection
 Output Short Circuit Protection
 Color: Black

Safety Plug



SP4

SP5

A Mains Cut-off Plug that is an option for some Moteck control boxes
 Automatically cut off AC power while no operation
 Type: SP4 (Wall Plug type) / SP5 (Power Cord type)
 Color: Black
 Plug Type: EU / US / UK

| OPTION |

Color: Gray

TSW2



Switching Mode Power Supply
 Input: 100 ~ 240 VAC, 60/50 Hz
 Output: 29 VDC
 Rated Current: 2.0 A
 Output Over Voltage Protection
 Input / Output Over Current Protection
 Output Short Circuit Protection
 With Emergency Lowering Function by 2*9V Batt.
 Color: Black

Accessory

External Limit Switch



Color: Gray
Protection Rating: IPX5

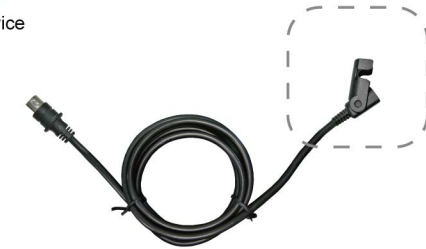
Extension Cable



Extension cable of Actuator or Handset
Color: Black

| OPTION |

Anti-pull device



Y Cable



2H1C



1H2C

Connection between Handset and Control Box
Type: 2H1C (2 Handsets work with 1 Control Box)
1H2C (1 Handset work with 2 Control Boxes)
Color: Light Gray (RAL 7035)

VM01



Massage Motor
Motor Voltage: 24 / 12 VDC
Max. Current: 0.5A @ 24 VDC
Thermal Overload Protection
Duty Cycle: 20% (max. 30 min continuous on)

| OPTION |

Mounting Bracket

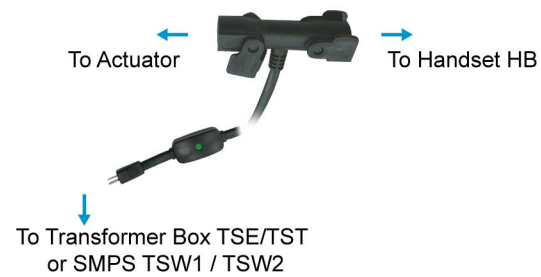


T Connector

Connect Transformer Box or SMPS to Handset and Actuator (No Control Box needed)
Color: Black

| OPTION |

DC power LED indicator



About us

MOTECK is a company draws on a heritage of more than 20 years of innovation, production and excellence in Linear Actuator and Control fields.

Our factories are located in Taoyuan, Taiwan, within distance reach to Taipei and Suzhou, China, fairly close to Shanghai. The head office is in Taipei, Taiwan.

We are passionate to build a high-performing company that offers our customers the best solution for their applications. Our innovative capability, quality consistency and on-time delivery are highly appreciated by our customers.

We welcome any inquiries from our existing products or custom design projects.

Taiwan
Taipei Head Office
1,800 m²

Taiwan
Taoyuan
5,000 m²

Factory

China
Suzhou Factory
20,000 m²