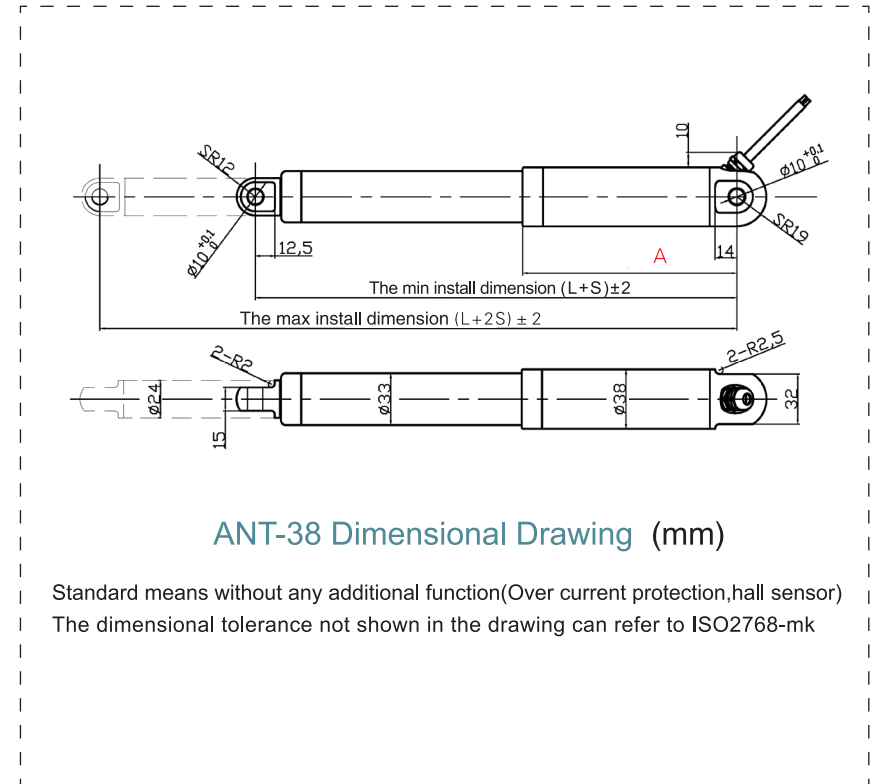




ANT-38 With the internal limit switch

ANT-38 has a longer life span.ANT-38 is an upgrated version of ANT-35.

Applied to industrial automation, window opening and vehicle refitting



ACTUATOR SMALLER FOR MORE



Voltage(V)	12 24	No-load current(A)	≤0.6 ≤0.3	Load current(A)	≤3.8 ≤1.8
Max. Power(W)	60	Material of outer tube	6063 Aluminium	Material of lead screw	Trapezoid,Steel
Material of piston rod	304 stainless steel	Material of the nut	Plastic	Working duty(S2)	Work 2 minutes and rest 18 minutes
Life time(cycles)	10k	Protection Class	IP66	Noise on load (dB)	60
Operating temperature(℃)	-20~60	Storage temperature(℃)	-40~70	Certification	CE
Backlash (mm)	0.5-1	Colour	Black	Wire length(m)	1.5
Wire connection	Bare wire 4 pins connector 6 pins connector	End mounting	O type		

ANT-38 Over current protection	[mm]	Limit switch		Hall sensor		Over current protection	
		Normal	Low noise	Normal	Low noise	Normal	Low noise
≤800N	L+S	200+S	210+S	220+S	220+S	220+S	-
	A	128.5	138.5	148.5	148.5	148.5	-
>800N	L+S	210+S	220+S	230+S	230+S	230+S	-
	A	138.5	148.5	158.5	158.5	158.5	-

Noise level 53dB for the low noise version

Max load(N)	100	300	400	600	800	1200	1800	2300
Self-locking force(N)	150	600	600	1600	1600	1800	3600	3450
No-load speed(mm/s)	35	25	18	12	12	6.8	4.5	3.5
Load speed(mm/s)	30	17	14	9	7	4.5	3	2.3

ANT-38 Technical data

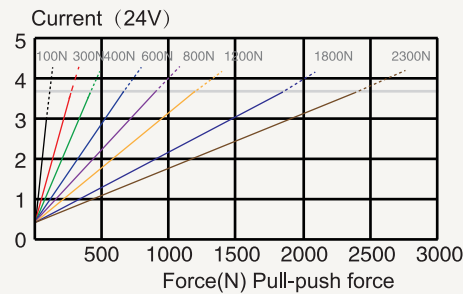
Standard stroke									Special stroke
Stroke(mm)	50	100	150	200	250	300	350	400	Customized
Weight (kg)	0.85	0.95	1.05	1.15	1.25	1.35	1.45	1.65	

The min stroke:10mm
The max stroke:500mm
Precision:±2 mm

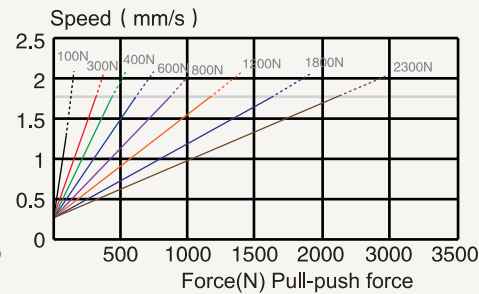
ANT-38 CURVE

Accuracy of speed or current :
±10%, in general, applications
in the dashed are not recommended.

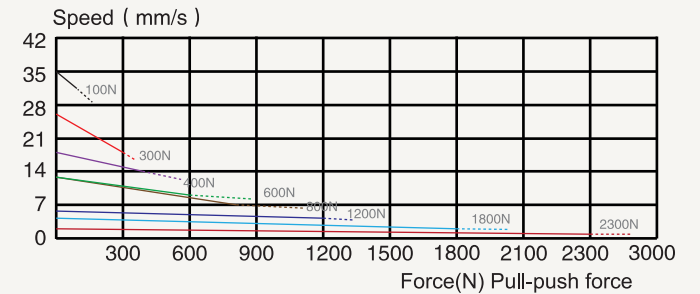
CURVE(Force/ current)



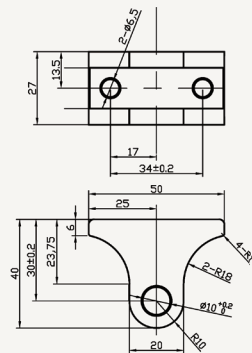
CURVE(Force/ current)



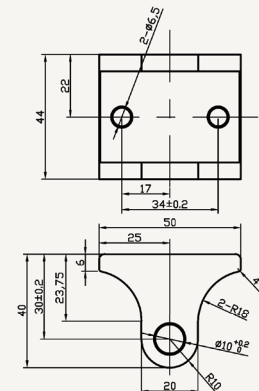
CURVE(Speed/force)



ANT-38 Mounting Bracket



35F
Front mount bracket



38R
End mount bracket

Controllers available

One actuator output controller, Two actuator output controller, Three actuator output controller