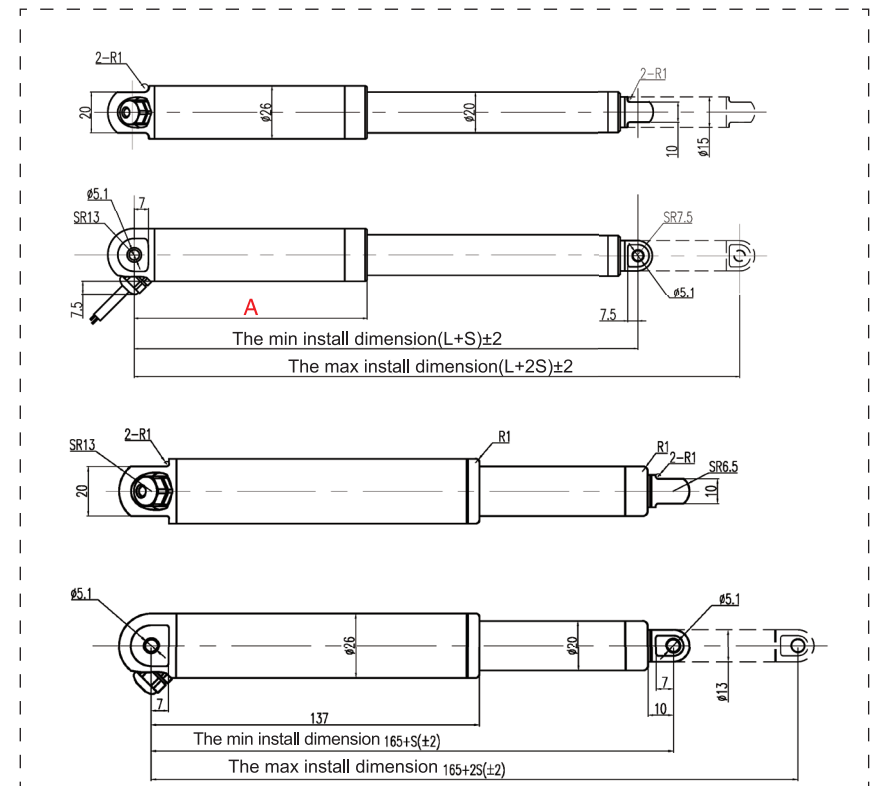


## ANT-26 The perfect combination of size and force

The diameter of excircle is 26mm with the max load of 500N.

The option of the limit switch makes this series popular in various fields.

ANT-26 has been used in the area of ship, window, furniture and industrial automation.



## ANT-26 Dimensional Drawing (mm)

The drawing above: standard dimensional drawing

The drawing below: the dimensional drawing with the limit switch

Standard means without any additional function (Over current protection, hall sensor, limit switch)

The dimensional tolerance not shown in the drawing can refer to ISO2768-mk

# ACTUATOR SMALLER FOR MORE



<b>Voltage(V)</b>	12 24	<b>No-load current(A)</b>	≤0.4 ≤0.2	<b>Load current(A)</b>	≤1.3 ≤0.7
<b>Max. Power(W)</b>	30	<b>Material of outer tube</b>	6063 Aluminium	<b>Material of lead screw</b>	Trapezoid,Steel
<b>Material of piston rod</b>	316 stainless steel	<b>Material of the nut</b>	Plastic	<b>Working duty(S2)</b>	Work 2 minutes and rest 18 minutes
<b>Life time(cycles)</b>	10k	<b>Protection Class</b>	IP66	<b>Noise on load (dB)</b>	65
<b>Operating temperature(°C)</b>	-20~60	<b>Storage temperature(°C)</b>	-40~70	<b>Certification</b>	CE
<b>Backlash (mm)</b>	0.4	<b>Colour</b>	Black	<b>Wire length(m)</b>	1.5
<b>Wire connection</b>	Bare wire 4 pins connector 6 pins connector	<b>End mounting</b>	O type		

ANT-26 Min. Install dimension [mm]		Standard	Hall sensor	Over current protection	Limit switch
	L+S	150+S	170+S	170+S	165+S
	A	115	135	135	137

### ANT-26 Technical data

Max load(N)	100	250	500
Self-locking force(N)	150	375	750
No-load speed(mm/s)	15	8.5	5
Load speed(mm/s)	11	6	3.5

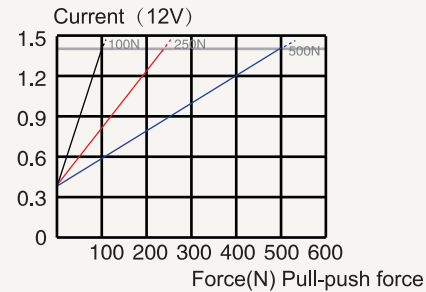
	Standard stroke				Special stroke
Stroke(mm)	50	100	150	200	Customized
Weight (kg)	0.35	0.4	0.45	0.5	

The min stroke:10mm  
 The max stroke:200mm  
 Precision:±2 mm

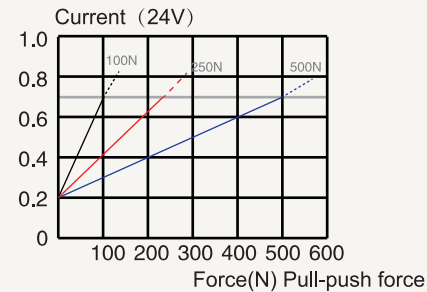
### ANT-26 CURVE

Accuracy of speed or current :  
 ±10%, in general, applications  
 in the dashed are not recommended.

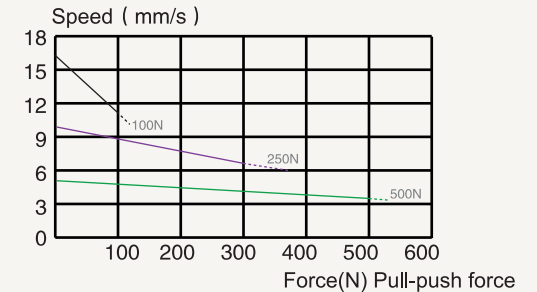
CURVE(Force/ current)



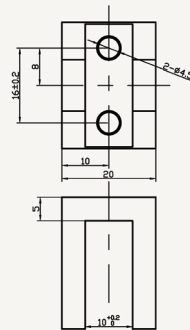
CURVE(Force/ current)



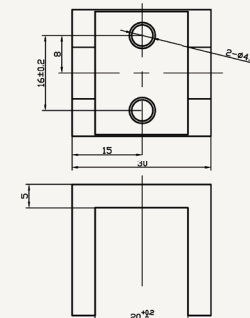
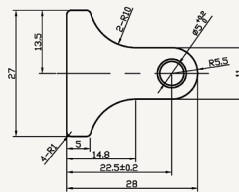
CURVE(Speed/force)



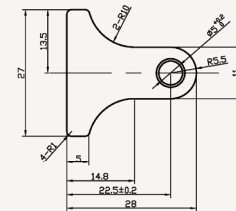
### ANT-26 Mounting Bracket



26F  
 Front mount bracket



26R  
 End mount bracket



### Controllers available

One actuator output controller, Two actuator output controller, Three actuator output controller