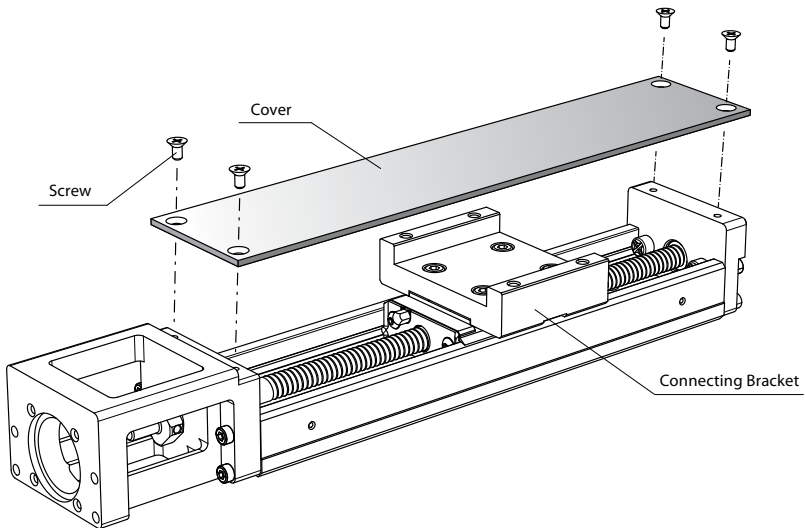


## J. Options

---

### Cover

KM series provides cover and transfer seat option. The detail size could be referred by specification tables of product, please.



### Bellows

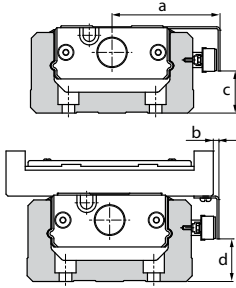
For KM series, a bellows is available for option. Please contact *PMI*.

## Sensor

For KM series, a optional proximity sensors and photo sensors are available as an option. Models equipped with a sensor are provided with a dedicated sensor rail / detecting plate. Please see the table below.

Symbol	Description	Type	Accessory
0	None	-	-
1	with Sensor rail	-	Mounting Screw
2	Photo sensor (3 units)	EE-SX671 (Omron)	Mounting Screw / Nut, Detecting Plate, Sensor Rail, Mounting Plate, Connector (EE-1001)
3	Photo sensor (3 units)	EE-SX674 (Omron)	Mounting Screw / Nut, Detecting Plate, Sensor Rail, Mounting Plate, Connector (EE-1001)
4	Proximity sensor a-contact (On when close, 3 units)	GX-F12A(Panasonic)	Mounting Screw/Nut \ Detecting Plate \ Sensor Rail
5	Proximity sensor b-contact (On when away, 3 units)	GX-F12B(Panasonic)	Mounting Screw/Nut \ Detecting Plate \ Sensor Rail
A	Proximity sensor a-contact (Single) b-contact (Double)	GX-F12A(Single) \ GX-F12B(Double)	Mounting Screw/Nut \ Detecting Plate \ Sensor Rail

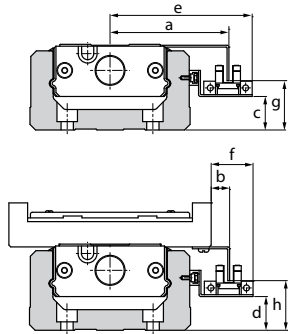
**The dimension of installation for sensor:**



**Panasonic GX-F12A \ GX-F12B**

Model	a	b	c	d
KM 20	34.2	8.2	3.5	3.5
KM 26	38.9	7.9	6.2	6.2
KM 30	44	4	8.2	8.2
KM 33	44	1	9.2	10
KM 45	54.0	2.0	13.2	13
KM 46	57.0	1.0	22.2	23
KM 55	64	2	21.2	22.7
KM 65	79.0	-6.0	23.3	23.3

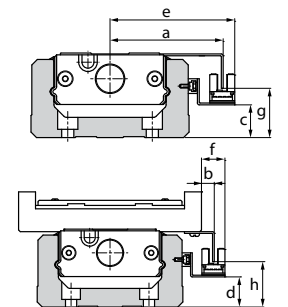
Unit : mm



**Omron EE-SX671**

Model	a	b	c	d	e	f	g	h
KM 20	41	15	1.5	1.5	53.5	27.5	8	8
KM 26	46.0	15.0	2.0	2.0	58.5	27.5	10.5	10.5
KM 30	50.9	10.9	3.8	3.8	63.4	23.4	12.8	14
KM 33	50.9	7.9	5.0	5.0	63.4	20.4	13.8	15
KM 45	60.5	8.9	8.8	8.8	73.4	21.4	17.7	19
KM 46	63.9	7.9	18.0	18.0	76.4	20.4	26.5	28
KM 55	72	8.8	17.0	17.0	83.3	21.3	25.5	27
KM 65	85.8	0.8	19.0	19.0	98.3	13.3	27.7	27.7

Unit : mm

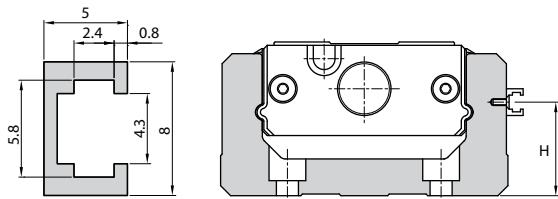


**Omron EE-SX674**

Model	a	b	c	d	e	f	g	h
KM 20	38.7	12.7	1.3	1.3	45	19	8.5	8.5
KM 26	43.7	12.7	1.8	1.8	50.0	19.0	10.8	10.8
KM 30	48.6	8.6	3.6	3.6	54.9	14.9	12.8	12.6
KM 33	48.6	5.6	4.8	4.8	54.9	11.9	13.8	14
KM 45	58.6	6.6	8.8	8.8	64.9	12.9	18.2	19.3
KM 46	61.6	5.6	17.8	17.8	67.9	11.9	26.8	28.1
KM 55	68.5	6.9	16.8	16.8	74.8	12.8	26.8	27.5
KM 65	83.5	-1.5	19.0	19.0	89.8	4.8	28.3	28.3

Unit : mm

**The dimension of sensor rail:**



Model	H
KM 20	9.5
KM 26	12
KM 30	14
KM 33	15
KM 45	19
KM 46	28
KM 55	27
KM 65	30

**Intermediate Flange**

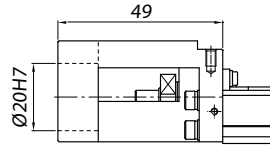
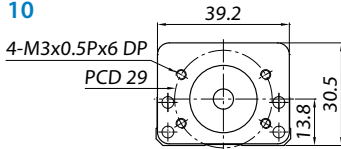
KM series allow different motors to be attached by intermediate flange. Please see the table below when ordering. Unit : mm

Brand of Motor	Model	KM 20	KM 26	KM 30	KM 33	KM 45	KM 46	KM 55	KM 65
Yaskawa Electric AC servomotor	SGMAH-A3(30W)	1A	2A	3A	3A	4A	4A		
	SGMAH-A5(50W)	1A	2A	3A	3A	4A	4A		
	SGMAH-01(100W)			3A	3A	4A	4A		
	SGMPH-01(100W)					40	40	50	6C
	SGMAH-02(200W)					40	40	50	6C
	SGMAH-04(400W)					40	40	50	6C
	SGMPH-02(200W)							5C	60
	SGMPH-04(400W)							5C	60
	SGMAH-08(750W)							5C	6G
Mitsubishi Electric AC servomotor	HC-MFS053(50W)	1A	2A	3A	3A	4A	4A		
	HC-MFS13(100W)			3A	3A	4A	4A		
	HC-MFS23(200W)					40	40	50	6C
	HC-KFS23(200W)					40	40	50	6C
	HC-MFS43(400W)					40	40	50	6C
	HC-KFS43(400W)					40	40	50	6C
	HC-MFS73(750W)							5C	6G
	HC-KFS73(750W)							5C	6G
Matsushita Electric AC servomotor	MSMD5A(50W)	1D	2D	3D	3D	4D	4D		
	MSMD01(100W)			3D	3D	4D	4D		
	MSMD02(200W)						40		
	MSMD04(400W)						40		
	MSMD08(750W)							5F	6F
Fastech Stepping motor	EzM-28	1G	2G						
	EzM-42	1H	2H	3H	3H	4H	4H		
	EzM-56			3I	3I	4I	4I		
	EzM-60			3J	3J	4J	4J		
Oriental Motor Stepping motor	PK22	1G	2G						
	PK24	1H	2H	3H	3H	4H	4H		
	PK26(Standard)			3I	3I	4I	4I		
	RK54	1H	2H	3H	3H	4H	4H		
	RK56			3J	3J	4J	4J		
	RK59							5K	6K

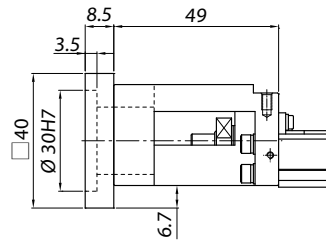
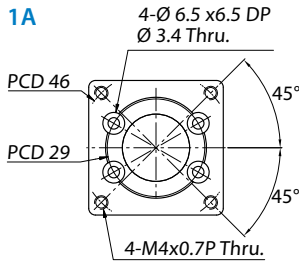
The dimension of intermediate flange:

KM20

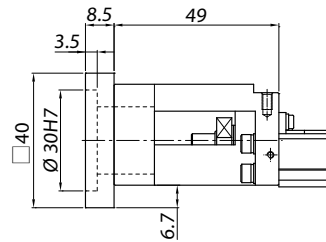
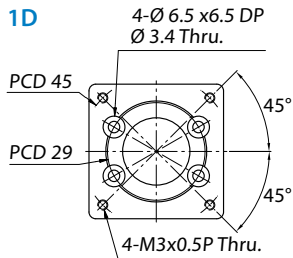
10



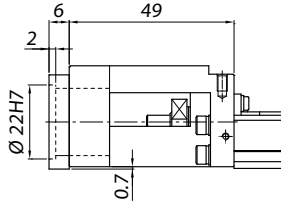
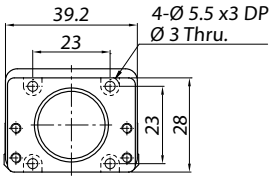
1A



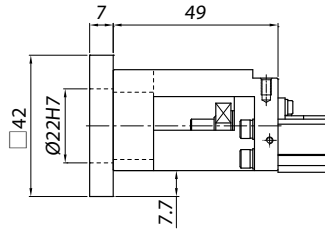
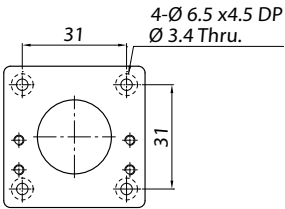
1D



1G

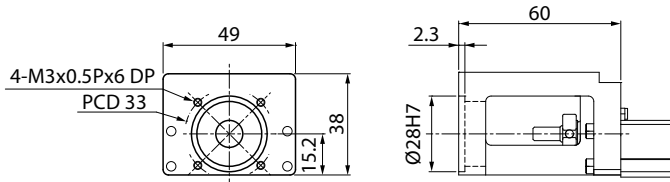


1H

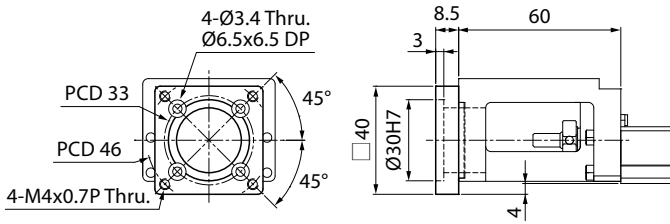


KM26

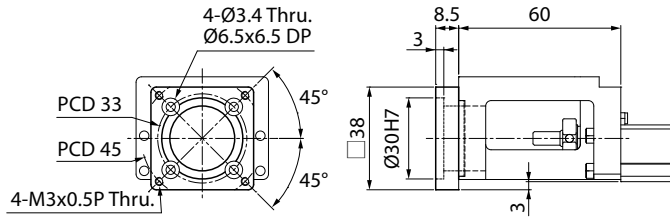
20



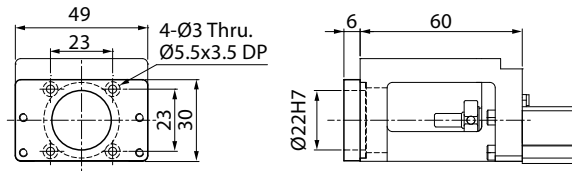
2A



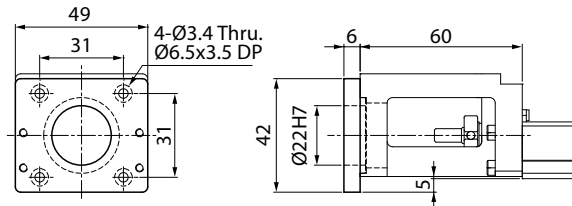
2D



2G



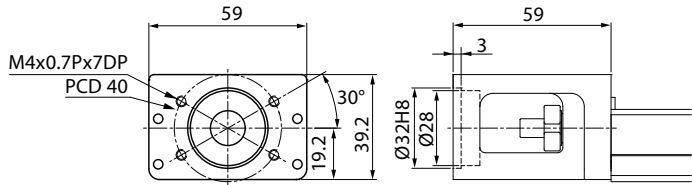
2H



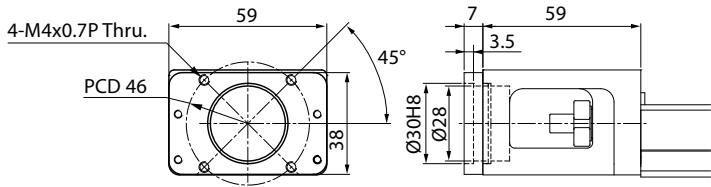


KM30

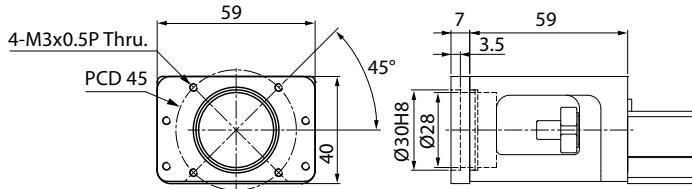
30



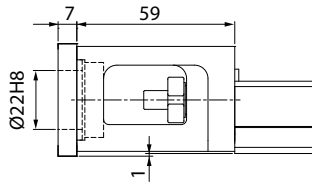
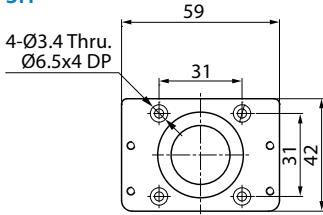
3A



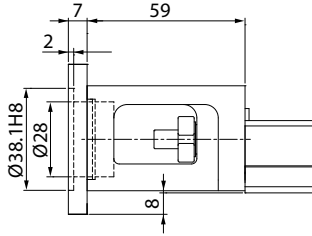
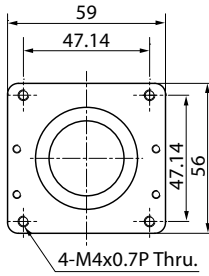
3D



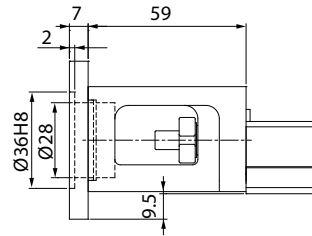
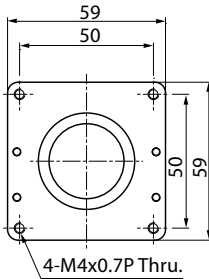
3H



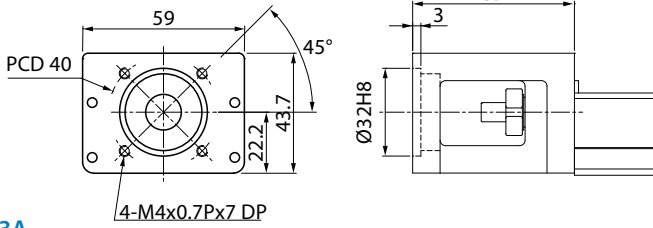
3I



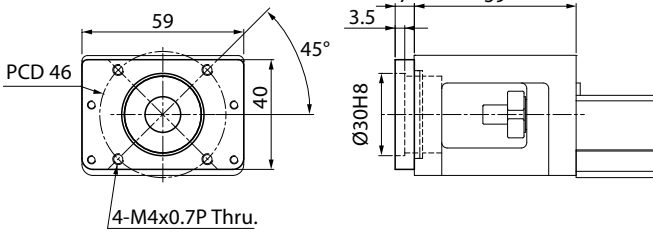
3J



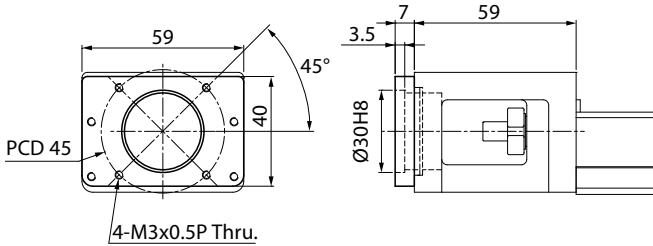
30



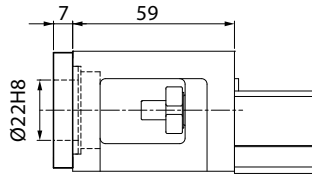
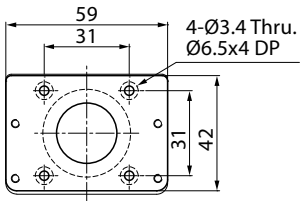
3A



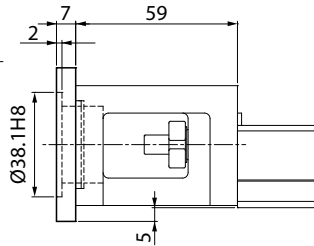
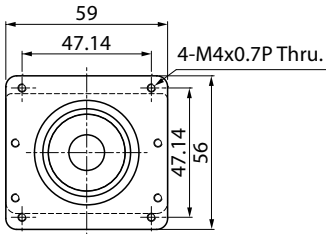
3D



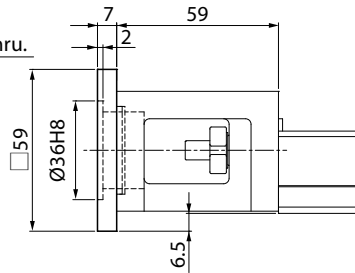
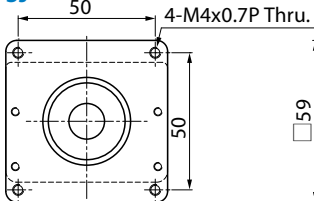
3H



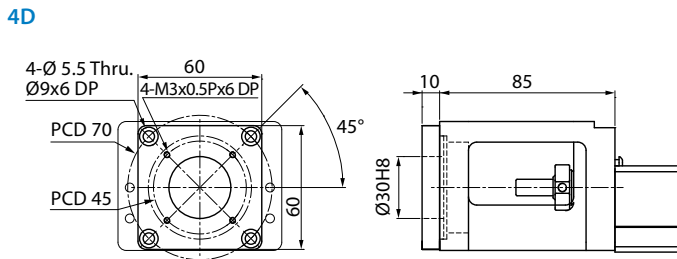
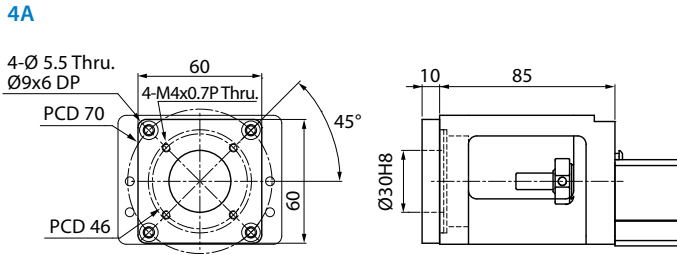
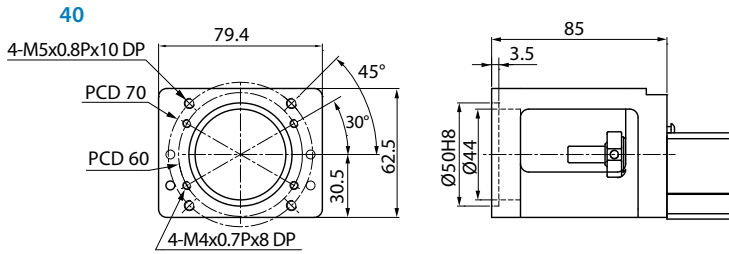
3I



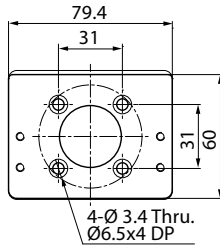
3J



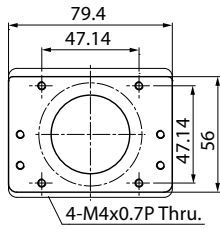
KM45



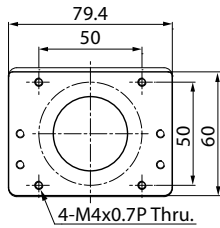
4H



4I

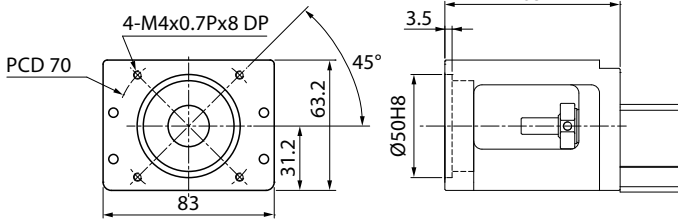


4J

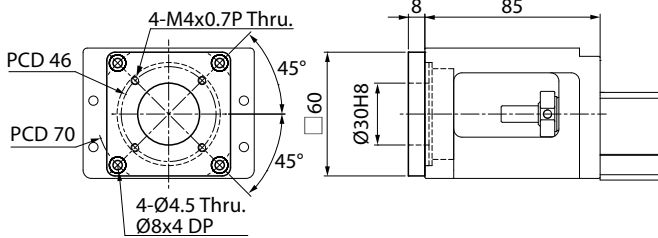


KM46

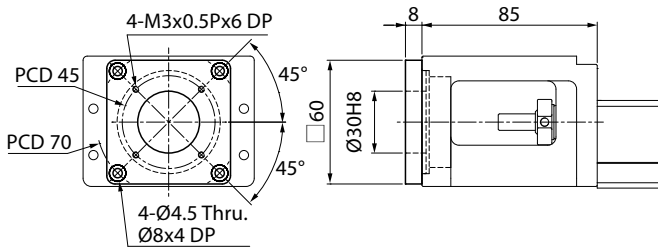
40



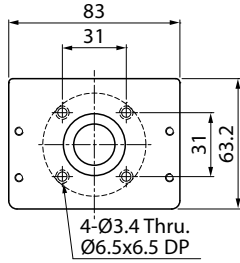
4A



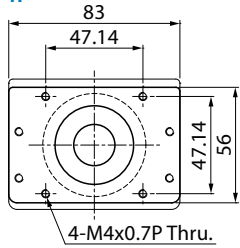
4D



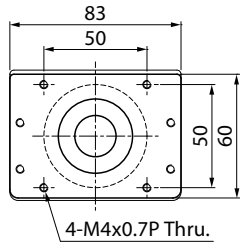
4H



4I



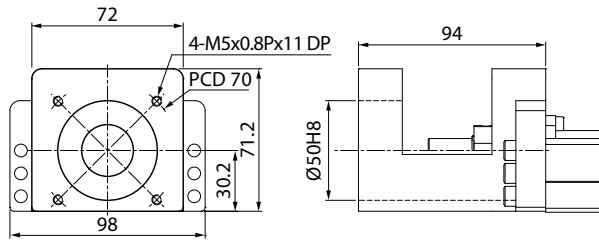
4J



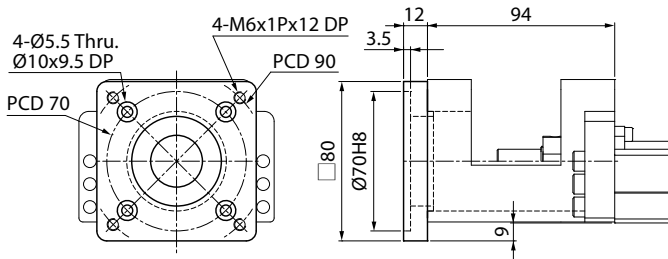


KM55

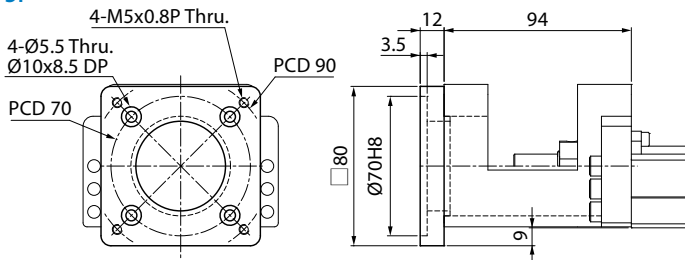
50



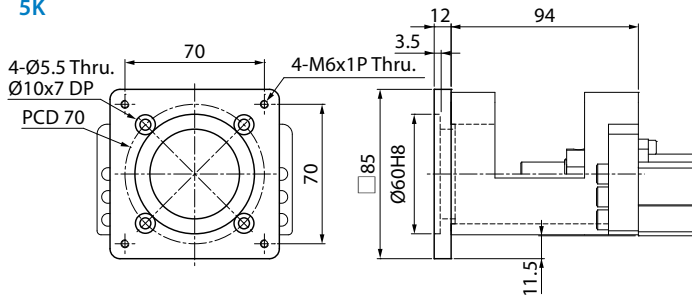
5C



5F

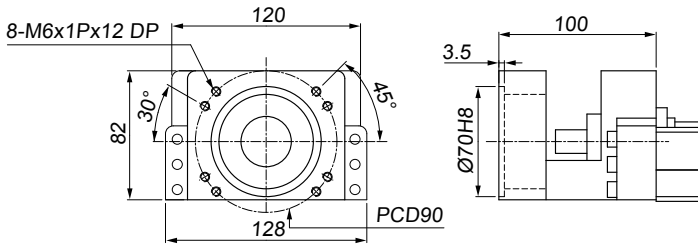


5K

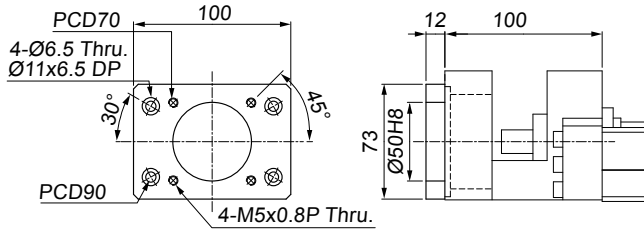


KM65

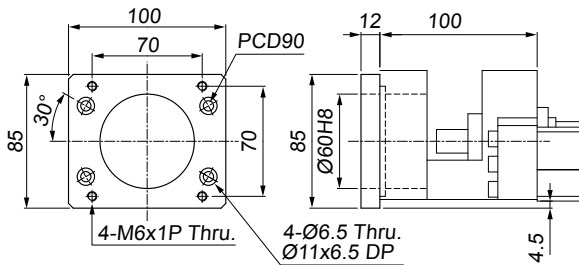
60



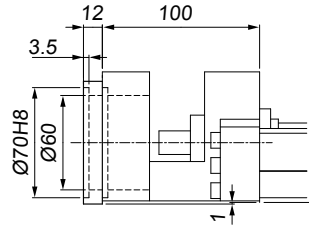
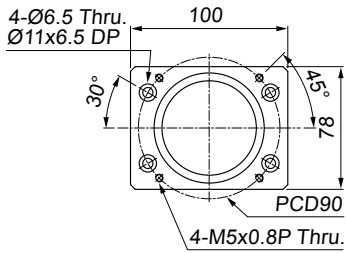
6C



6K



6F



6G

