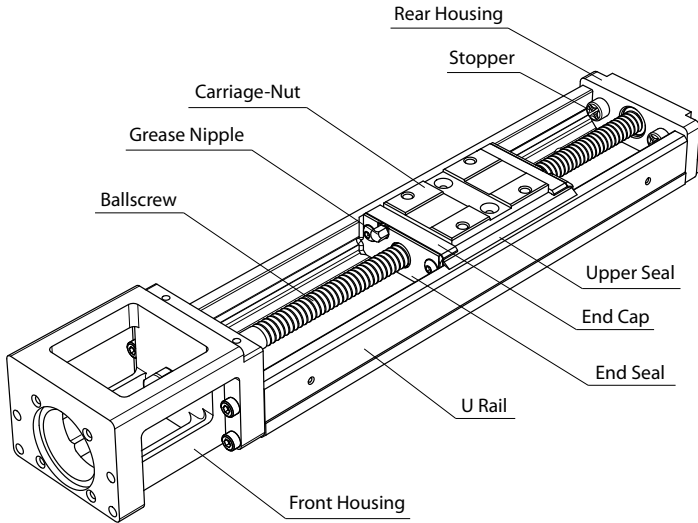


A. Construction

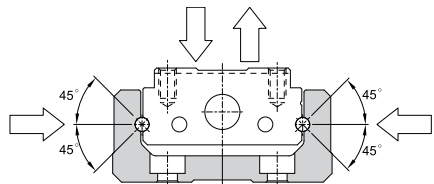


B. Characteristics

KM series consist of linear guideway unit and ballscrew unit. For saving space, **PMI** combine the carriage of linear guideway and nut of ballscrew to a integral Carriage-Nut. The carriage-nut cooperate with the U rail designed for high rigidity to achieve the high rigidity and high accuracy in the minimal space, especially to saving time of installation. Moreover, the design of two rows with Gothic-arch groove and contact angle of 45° can bear four directional loading.

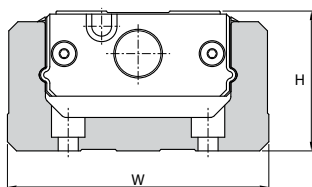
Four Directional Equal Load

KM series are applied two rows with Gothic-arch groove and designed to contact angle of 45° which enables it to carry an equal load in radial, reversed radial and lateral directions to suit to any mounting orientation.



Saving Space

Combine the carriage of linear guideway and nut of ballscrew to a carriage-nut, KM series can achieve the best use of space.

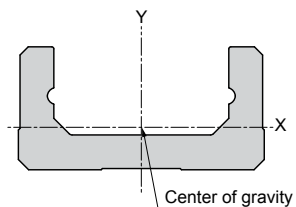
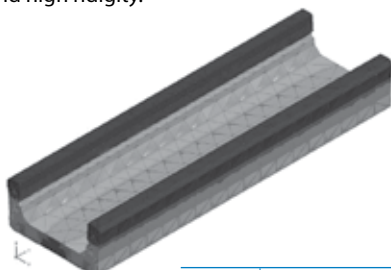


Unit : mm

Model	H	W
KM20	20	40
KM26	26	50
KM30	30	60
KM 33	33	60
KM 45	45	80
KM 46	46	86
KM 55	55	100
KM 65	65	130

High Rigidity

Base on the optimal analysis of FEM for the shape of U rail, it has the balance between light weight and high rigidity.



Unit : mm⁴

Model	I _x	I _y
KM20	5.8×10 ³	6.0×10 ⁴
KM26	1.6×10 ⁴	1.5×10 ⁵
KM30	4.4×10 ⁴	3.3×10 ⁵
KM 33	6.1×10 ⁴	3.8×10 ⁵
KM 45	1.5×10 ⁵	1.1×10 ⁶
KM 46	2.5×10 ⁵	1.6×10 ⁶
KM 55	2.3×10 ⁵	2.3×10 ⁶
KM 65	4.7×10 ⁵	5.9×10 ⁶

Note* I_x : Geometrical moment of inertia around X axis
I_y : Geometrical moment of inertia around Y axis

High Accuracy

The design of two rows with Gothic-arch groove and stable manufacturing technology can control the variation by load at the minimum. It can provide the smooth feed with high accuracy.