

ETB6

1-axis

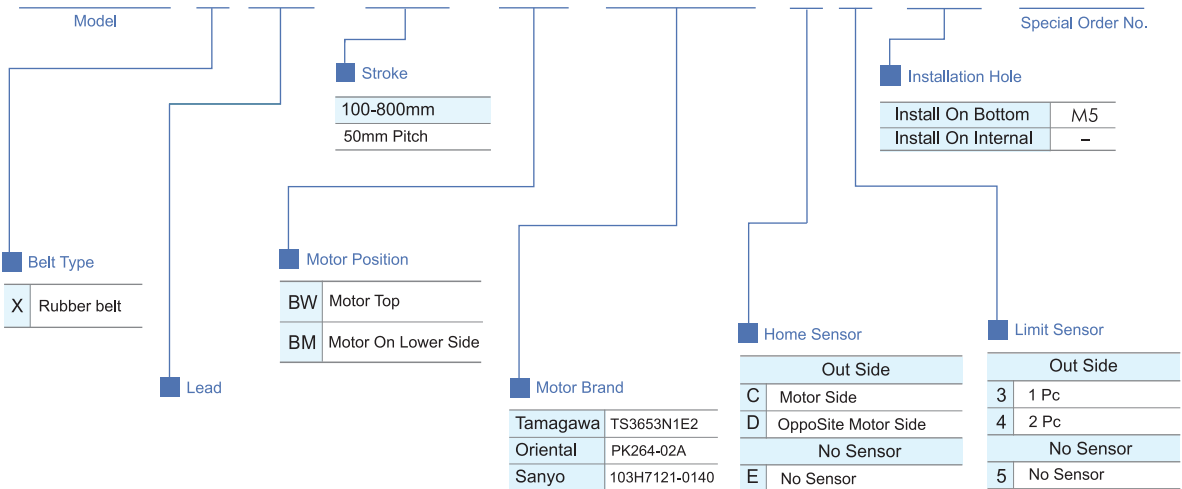
Belt Drive



Maximum Stroke	800mm	Maximum Speed	333mm/s	Maximum Static Torque	0.39 N.m.	Belt Width	12 mm	Linear Guide	42X9.5-1pc
----------------	-------	---------------	---------	-----------------------	-----------	------------	-------	--------------	------------

Ordering Method

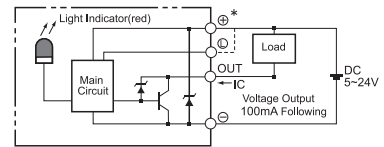
ETB6 - X 40 - 100 - BM - 57 M - C 4 - M5 - 0001



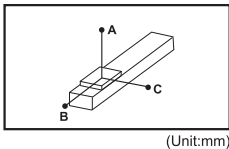
Specification

Function	Repeatability (mm)		±0.04
	Lead (mm)		40
	Maximum Speed (mm/s)		333
	Maximum Payload	Horizontal (kg)	15
		Vertical (kg)	
	Rated Thrust (N)		51
Stroke Pitch (mm)		100-800mm/50mm Pitch	
Parts	Maximum Static Torque (N.m.)		0.39
	Belt Width		12
	High Rigidity Linear Guide (mm)		42X9.5
	Home Sensor	Outside	EE-SX672(NPN)

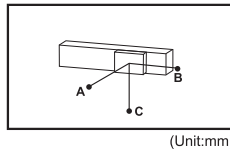
Sensor Layout



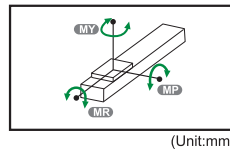
Allowable Overhang N.m



Horizontal Installation	A	B	C
5kg	450	63	200
15kg	216	24	77



Wall Installation	A	B	C
5kg	150	45	340
15kg	43	0	130



Static Loading Moment

MY	93(N)
MP	93(N)
MR	257(N)

Suitable Motor Brand

Brand	Maximum Static Torque	AC-Voltage	Stepper Motor Model	Driver Model
Tamagawa	0.39	DC24V	2-Phase-TS3653N1E2	CD-2D34M Resolution-200/400/800/1600
Oriental	0.39	DC24V	2-Phase-PK264-02A	CMD2120P Resolution-200/400/800/1600/3200
Sanyo	0.39	DC24V	2-Phase-103H7121-0140	US1D200P10 Resolution-200/400/800/1600/3200

Application
Standard/Ball Screw
Rod Type Actuator
Standard/Belt Type
Clean Room/Ball Screw
Clean Room/Belt Type
Linear Motor
Multi Axis
Alignment Stage
Reference

1 axis
ETB
ETB5
ETB6
ETB10
ETB14M
ETB17M
ETB22M

ETB6

1-axis

Motor Top /
Motor On Lower Side

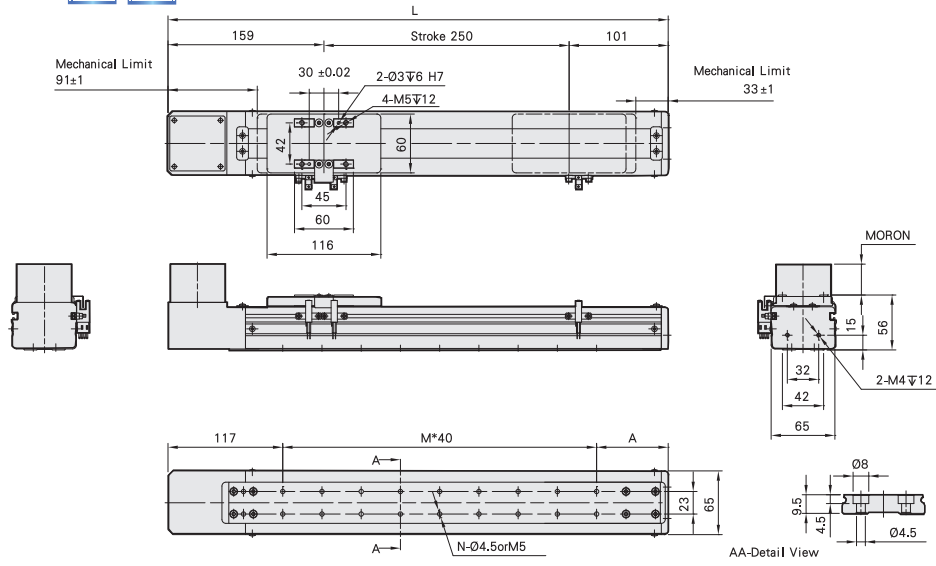
BW

Motor Top



Welcome to download 2D/3D CAD and spec PDF

(mm)



Stroke	100	150	200	250	300	350	400	450	500	550	600	650	700	750	800
L	360	410	460	510	560	610	660	710	760	810	860	910	960	1010	1060
A	83	93	63	73	83	93	63	73	83	93	63	73	83	93	63
M	4	5	7	8	9	10	12	13	14	15	17	18	19	20	22
N	10	12	16	18	20	22	26	28	30	32	36	38	40	42	46
KG	2.5	2.6	2.8	3	3.3	3.4	3.5	3.7	3.9	4.1	4.2	4.4	4.6	4.8	4.9

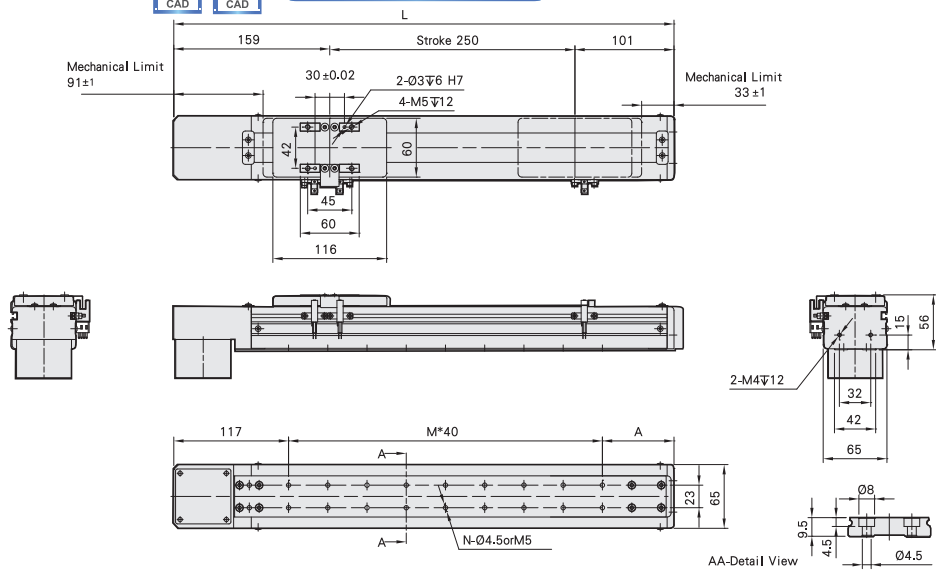
BM

Motor On Lower Side



Welcome to download 2D/3D CAD and spec PDF

(mm)



Stroke	100	150	200	250	300	350	400	450	500	550	600	650	700	750	800
L	360	410	460	510	560	610	660	710	760	810	860	910	960	1010	1060
A	83	93	63	73	83	93	63	73	83	93	63	73	83	93	63
M	4	5	7	8	9	10	12	13	14	15	17	18	19	20	22
N	10	12	16	18	20	22	26	28	30	32	36	38	40	42	46
KG	2.5	2.6	2.8	3	3.3	3.4	3.5	3.7	3.9	4.1	4.2	4.4	4.6	4.8	4.9

Toll-Free Number : China 400-875-0009 Taiwan 0800-800-893

MEMO

Application

Standard/Ball Screw

Rod Type Actuator

Standard/Belt Type

Clean Room/Ball Screw

Clean Room/Belt Type

Linear Motor

Multi Axis

Alignment Stage

Reference

1 axis ETB

ETB5

ETB6

ETB10

ETB14M

ETB17M

ETB22M

ETB6

1-axis

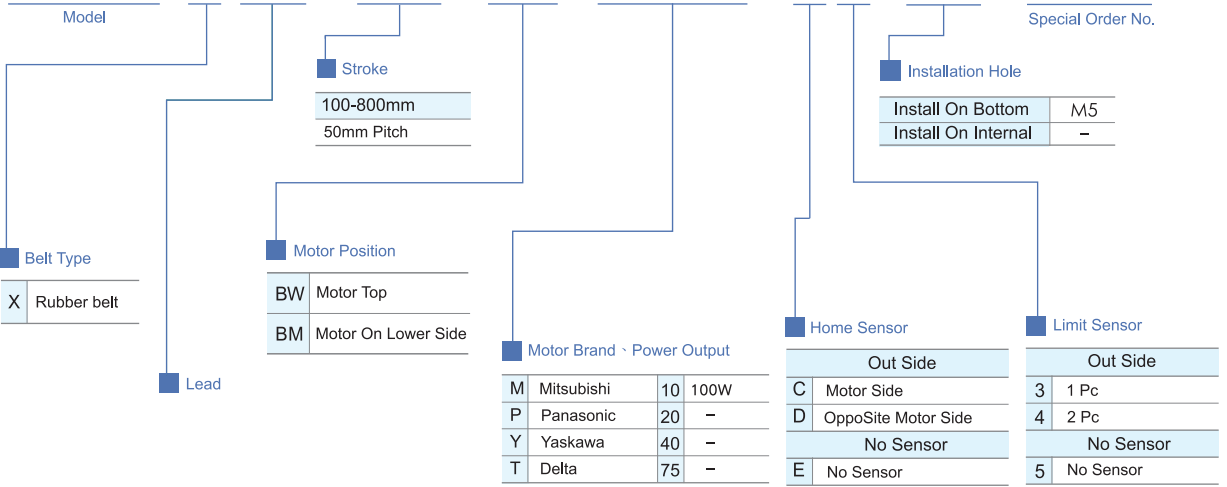
Belt Drive



Maximum Stroke **800mm** Maximum Speed **2000mm/s** Motor Output **100W** Belt Width **12 mm** Linear Guide **42X9.5-1pc**

Ordering Method

ETB6 - X 40 - 100 - BM - M 10 - C 4 - M5 - 0001

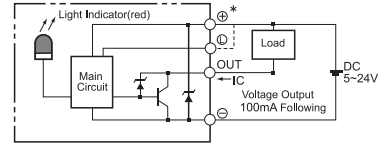


Application
Standard/Belt Screw
Rod Type Actuator
Standard/Belt Type
Clean Room/Belt Screw
Clean Room/Belt Type
Linear Motor
Multi Axis
Alignment Stage
Reference

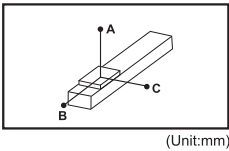
Specification

Sensor Layout

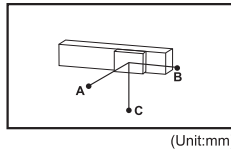
Function	Repeatability (mm)		±0.04
	Lead (mm)		40
	Maximum Speed (mm/s)		2000
	Maximum Payload	Horizontal (kg)	3
		Vertical (kg)	
	Rated Thrust (N)		42
Stroke Pitch (mm)		100-800mm/50mm Pitch	
Parts	AC Servo Motor Output (w)		100
	Belt Width		12
	High Rigidity Linear Guide (mm)		42X9,5
	Home Sensor	Outside	EE-SX672(NPN)



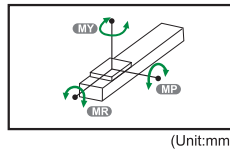
Allowable Overhang N.m



Horizontal Installation	A	B	C
3kg	450	63	200



Wall Installation	A	B	C
3kg	150	45	340



Static Loading Moment

MY	93(N)
MP	93(N)
MR	257(N)

Suitable Motor Brand

Brand	Mark	Brake	Watp	AC-Voltage	Motor Model	Driver Model
Mitsubishi	M	No Brake (Horizontal Type)	100	220	HF-KP13	MR-J3-10A
Panasonic	P	No Brake (Horizontal Type)	100	220	MSMD012P1S	MADDT1205
Delta	T	No Brake (Horizontal Type)	100	220	ECMA-C20401ES	ASD-B20121-B

1 axis
ETB

ETB5

ETB6

ETB10

ETB14M

ETB17M

ETB22M

ETB6

1-axis

Motor Top /
Motor On Lower Side

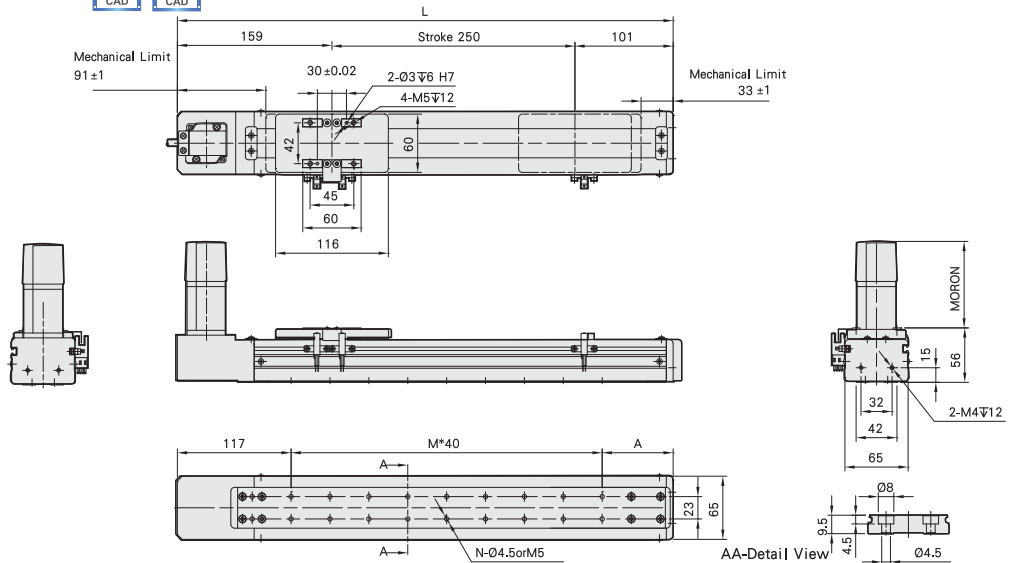
BW

Motor Top



Welcome to download 2D/3D CAD and spec PDF

(mm)



Stroke	100	150	200	250	300	350	400	450	500	550	600	650	700	750	800
L	360	410	460	510	560	610	660	710	760	810	860	910	960	1010	1060
A	83	93	63	73	83	93	63	73	83	93	63	73	83	93	63
M	4	5	7	8	9	10	12	13	14	15	17	18	19	20	22
N	10	12	16	18	20	22	26	28	30	32	36	38	40	42	46
KG	2.5	2.6	2.8	3	3.3	3.4	3.5	3.7	3.9	4.1	4.2	4.4	4.6	4.8	4.9

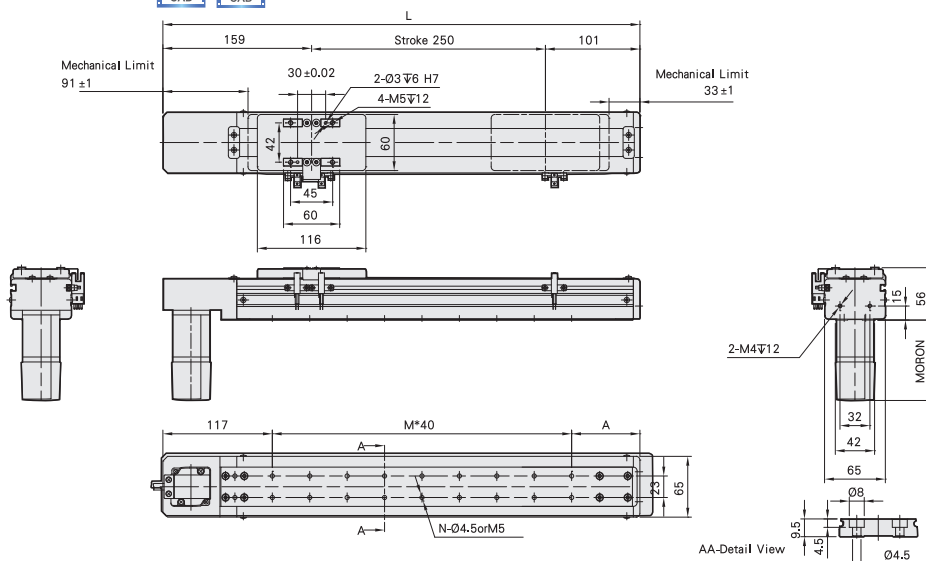
BW

Motor On Lower Side



Welcome to download 2D/3D CAD and spec PDF

(mm)



Stroke	100	150	200	250	300	350	400	450	500	550	600	650	700	750	800
L	360	410	460	510	560	610	660	710	760	810	860	910	960	1010	1060
A	83	93	63	73	83	93	63	73	83	93	63	73	83	93	63
M	4	5	7	8	9	10	12	13	14	15	17	18	19	20	22
N	10	12	16	18	20	22	26	28	30	32	36	38	40	42	46
KG	2.5	2.6	2.8	3	3.3	3.4	3.5	3.7	3.9	4.1	4.2	4.4	4.6	4.8	4.9

Toll-Free Number : China 400-875-0009 Taiwan 0800-800-893

MEMO

Application

Standard Ball Screw

Food Type Actuator

Standard/Belt Type

Clean Room Ball Screw

Clean Room Ball Type

Linear Motor

Multi Axis

Alignment Stage

Reference

1 axis ETB

ETB5

ETB6

ETB10

ETB14M

ETB17M

ETB22M