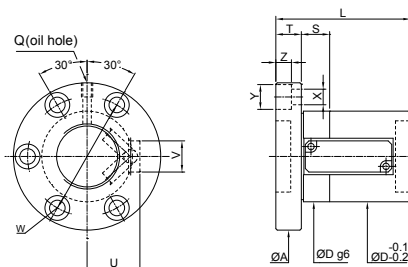
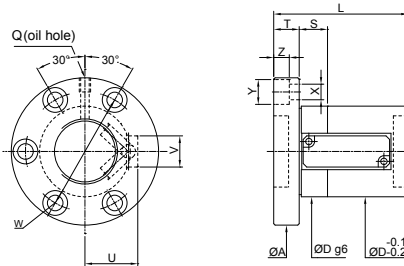


FSVE



Unit: mm

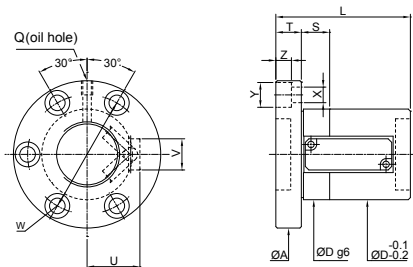
SCREW SIZE	BALL DIA.	EFFECTIVE TURNS circuit × row	BASIC RATE		NUT		FLANGE			FIT		OIL HOLE			RETURN TUBE		BOLT	STIFFNESS		
			Dynamic (1×10 ⁶ REV.) Ca	Static Co	Dg6	L	A	T	W	S	X	Y	Z	U	V	Q			kgf/μm	
12	10	2.381	2.5×1	420	720	25	50	48	10	36	10	4.5	8	4.4	14	12	M6×1P	20		
			3.5×1	1210	2380	38	63	62	13	50	10	5.5	9.5	5.5	23	15	M6×1P	34		
	16	3.969	1.5×1	830	1530	38	63	62	13	50	10	5.5	9.5	5.5	23	15	M6×1P	24		
			2.5×1	1210	2380	79	79												34	
20	16	3.969	1.5×1	830	1530	38	70	62	13	50	10	5.5	9.5	5.5	23	15	M6×1P	24		
			2.5×1	1210	2380	42	62	68	15	55	15	6.6	11	6.6	26	14	M6×1P	28		
	25	4.762	1.5×1	1170	2300	74	74											29		
			2.5×1	1710	3580	44	94	72	15	59	15	6.6	11	6.5	27	16	M6×1P	42		
32	16	3.969	3.5×1	2220	4860	114	114											55		
			1.5×1	1010	2480	63	63												33	
			2.5×1	1470	3860	79	79	78	15	63	15	6.6	11	6.6	29	15	M8×1P	48		
			3.5×1	1910	5240	95	95												63	
	16	6.35	5×1	5×1	2340	6610	111	111											77	
				2.5×1	2830	8200	92	92												54
				3.5×1	3680	11120	57	108	98	18	77	20	11	17.5	11	34	22	M8×1P	69	
				5×1	4490	14050	124	124												85
	20	3.969	5×1	1.5×1	1010	2480	70	70											33	
				2.5×1	1470	3860	90	90	78	15	63	15	6.6	11	6.6	29	15	M8×1P	48	
				3.5×1	1910	5240	110	110												63
				5×1	2350	6610	130	130												77
20	6.35	5×1	2.5×1	2830	8200	104	104											54		
			3.5×1	3680	11120	57	124	98	18	77	20	11	17.5	11	34	22	M8×1P	69		
			5×1	4490	14050	144	144												85	
			5×1	4490	14050	144	144												85	



Unit: mm

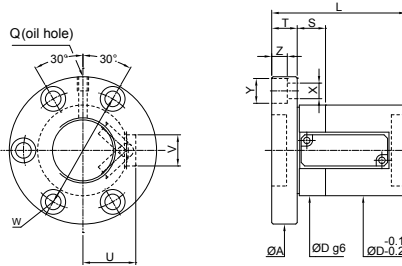
SCREW SIZE		BALL DIA.	EFFECTIVE TURNS circuit × row	BASIC RATE LOAD(kgf)		NUT		FLANGE			FIT			OIL HOLE			RETURN TUBE		BOLT	STIFFNESS
O.D.	LEAD			Dynamic (1×10 ⁶ REV.) Ca	Static Co	Dg6	L	A	T	W	S	X	Y	Z	U	V	Q	kgf/μm		
36	10	6.35	3.5×1	3890	9390	60	84	100	18	80	20	11	17.5	11	36	22	M8×1P	76		
			5×1	4750	11860		94											93		
	12	6.35	2.5×1	2990	6920	60	85	100	18	80	20	11	17.5	11	36	22	M8×1P	58		
			3.5×1	3890	9390		97											76		
	16	6.35	3.5×1	3890	9390	60	91	107	100	18	80	20	11	17.5	11	36	22	M8×1P	93	
			5×1	4750	11860		123												76	
	20	6.35	1.5×1	2050	4450	60	91	100	18	80	20	11	17.5	11	36	22	M8×1P	41		
			2.5×1	2990	6920		111											58		
			3.5×1	3890	9390		131											76		
			5×1	4750	11860		151											93		
40	10	6.35	3.5×1	4130	10560	64	84	104	18	84	20	11	17.5	11	38	22	PT1/8"	82		
			5×1	5050	13340		96											101		
	12	6.35	2.5×1	3180	7780	64	86	98	104	18	84	20	11	17.5	11	38	22	PT1/8"	63	
			3.5×1	4130	10560		98												82	
	16	6.35	2.5×1	3180	7780	64	93	109	104	18	84	20	11	17.5	11	38	22	PT1/8"	101	
			3.5×1	4130	10560		125												82	
	16	7.144	2.5×1	3740	8790	64	92	108	104	18	84	15	11	17.5	11	38	22	PT1/8"	65	
			3.5×1	4870	11930		108												84	
	20	6.35	3.5×1	5950	15070	64	124	108	104	18	84	20	11	17.5	11	38	22	PT1/8"	103	
			1.5×1	2180	5000		84												43	
20	6.35	2.5×1	3180	7780	64	104	104	18	84	20	11	17.5	11	38	22	PT1/8"	63			
		3.5×1	4130	10560		124											82			
40	6.35	5×1	5050	13340	64	144	130	104	18	84	20	11	17.5	11	38	22	PT1/8"	101		
		1.5×1	2180	5000		130												43		

FSVE



Unit: mm

SCREW SIZE		BALL DIA.	EFFECTIVE TURNS circuit × row	BASIC RATE LOAD/(kgf)		NUT		FLANGE			FIT		OIL HOLE				RETURN TUBE		BOLT	STIFFNESS
O.D.	LEAD			Dynamic (1×10 ⁶ REV.) Ca	Static Co	Dg6	L	A	T	W	S	X	Y	Z	U	V	Q	kgf/μm		
50	10	6.35	3.5×1	4560	13230	73	85	118	18	96	20	11	17.5	11	43	22	PT1/8"	97		
			5×1	5580	16710	95	119													
	12	6.35	2.5×1	3510	9750	82													74	
			3.5×1	4560	13230	73	94	118	18	96	20	11	17.5	11	43	22	PT1/8"	97		
	12	7.144	5×1	5580	16710	106													119	
			2.5×1	4080	11260	93														75
	16	6.35	3.5×1	5300	15280	75	105	122	20	98	15	14	20	13	44	24	PT1/8"	99		
			5×1	6480	19300	117														121
	16	7.144	2.5×1	3510	9750	94													74	
			3.5×1	4560	13230	73	110	118	18	96	20	11	17.5	11	43	22	PT1/8"	97		
	20	7.144	5×1	5580	16710	126													119	
			2.5×1	4080	11260	100														75
20	7.938	3.5×1	5300	15280	75	116	122	20	98	15	14	20	13	44	24	PT1/8"	99			
		5×1	6480	19300	132														121	
20	7.938	1.5×1	2790	7240	98													52		
		2.5×1	4080	11260	118														75	
50	7.938	3.5×1	5300	15280	75	118	122	20	98	15	14	20	13	44	20	PT1/8"	99			
		5×1	6480	19300	158														121	
50	7.938	2.5×1	4750	12090	119													78		
		3.5×1	6180	16400	76	139	123	25	99	20	14	20	13	46	25	PT1/8"	101			
50	7.938	5×1	7550	20720	159													124		
		1.5×1	3250	7770	76	115	123	25	99	20	14	20	13	46	25	PT1/8"	53			



Unit: mm

SCREW SIZE		BALL DIA.	EFFECTIVE TURNS circuit × row	BASIC RATE LOAD(kgf)		NUT		FLANGE			FIT			OIL HOLE		RETURN TUBE		BOLT Q	STIFFNESS kgf/μm	
O.D.	LEAD			Dynamic (1×10 ⁶ REV.) Ca	Static Co	Dg6	L	A	T	W	S	X	Y	Z	U	V				
63	10	6.35	3.5×1	5030	17020	86	86	133	22	108	20	14	20	13	49	24	PT1/8"	115		
			5×1	6150	1500	86	96												141	
	12	6.35	2.5×1	3870	12540	84													87	
			3.5×1	5030	17020	86	96	133	22	108	20	14	20	13	49	24	PT1/8"	115		
	12	7.144	2.5×1	4540	14460	90													89	
			3.5×1	5900	7210	87	102	134	22	110	20	14	20	13	50	25	PT1/8"	117		
	16	7.144	2.5×1	4540	14460	97													89	
			3.5×1	5900	7210	87	113	134	22	110	20	14	20	13	50	25	PT1/8"	117		
	16	7.938	2.5×1	5260	15430	112													91	
			3.5×1	6840	20940	89	128	148	28	118	25	18	26	17.5	52	25	PT1/8"	120		
	20	6.35	2.5×1	3870	12540	104													87	
			3.5×1	5030	17020	86	124	133	22	108	20	14	20	13	49	24	PT1/8"	115		
20	7.938	2.5×1	5260	15430	120													91		
		3.5×1	6840	20940	89	140	148	28	118	25	18	26	17.5	52	25	PT1/8"	120			
20	9.525	2.5×1	8870	25870	120													105		
		3.5×1	11530	35110	93	140	152	28	122	25	18	26	17.5	54	28	PT1/8"	136			
80	10	6.35	3.5×1	5030	17020	103	90	150	22	126	20	14	20	13	58	25	PT1/8"	133		
			5×1	6150	1500	103	100												164	
	12	7.938	3.5×1	7670	27030	101													143	
			5×1	9380	34140	123	113	170	22	146	20	14	20	13	66	28	PT1/8"	177		
	16	9.525	2.5×1	9400	33100	108													124	
			3.5×1	12220	44920	126	124	185	28	155	30	18	26	17.5	70	28	PT1/8"	162		
	20	9.525	2.5×1	9400	33100	120													124	
			3.5×1	12220	44920	126	140	185	28	155	30	18	26	17.5	70	28	PT1/8"	162		
	100	16	9.525	2.5×1	9990	33200	115												139	
				3.5×1	12990	45050	146	131	217	32	181	30	22	32	21.5	82	35	PT1/8"	182	
		20	9.525	2.5×1	9990	33200	128													226
				3.5×1	12990	45050	146	148	217	32	181	30	22	32	21.5	82	35	PT1/8"	182	
				2.5×1	15880	71320	168												226	
				5×1	15880	71320	168													226