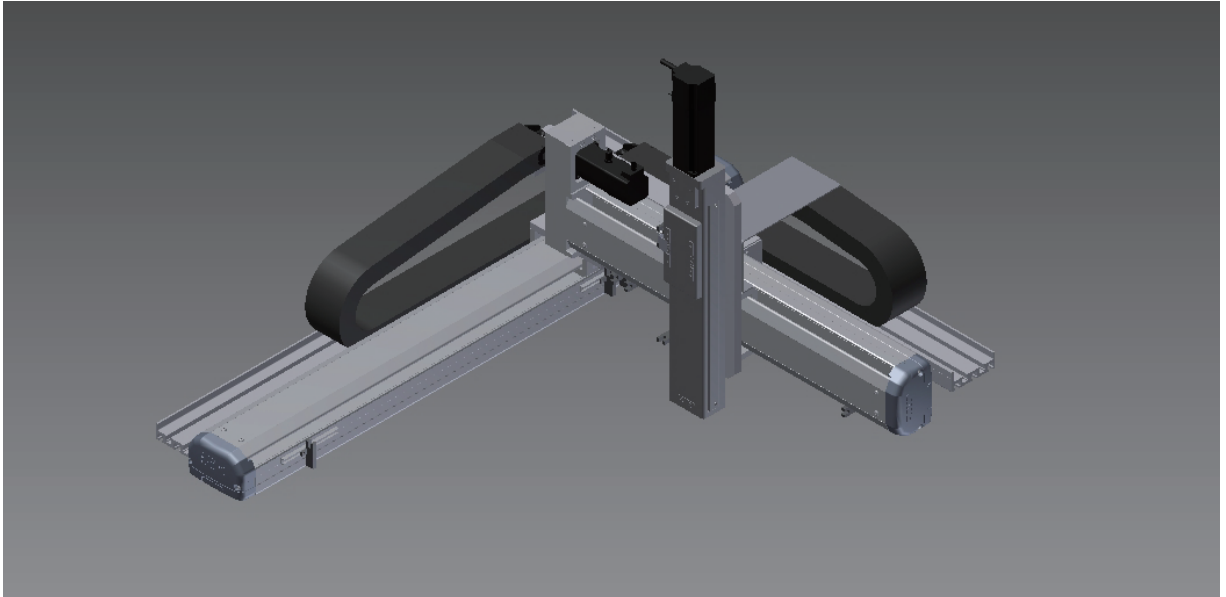


XYTH442-A

3-axis

Ball Screw Drive



Maximum Stroke

X axis 1050mm Y axis 450mm Z axis 250mm

Maximum Speed

X axis 800mm/s Y axis 800mm/s Z axis 500mm/s

AC Servo Motor Output

X axis 100W Y axis 100W Z axis 100W+Brake

Specification

Item	X axis	Y axis	Z axis
Axis Construction	ETH12	ETH12	ETH6M
Repeatability (mm)	±0.01	±0.01	±0.01
Ball Screw Lead (mm)	16	16	10
Maximum Speed (mm/s) ※3	800	800	500
Stroke 50 mm Pitch (mm)	100-1050	50-450	50-250
AC Servo Motor Output (w)	100	100	100+Brake
Environment	0-40°C , 85%RH Below		

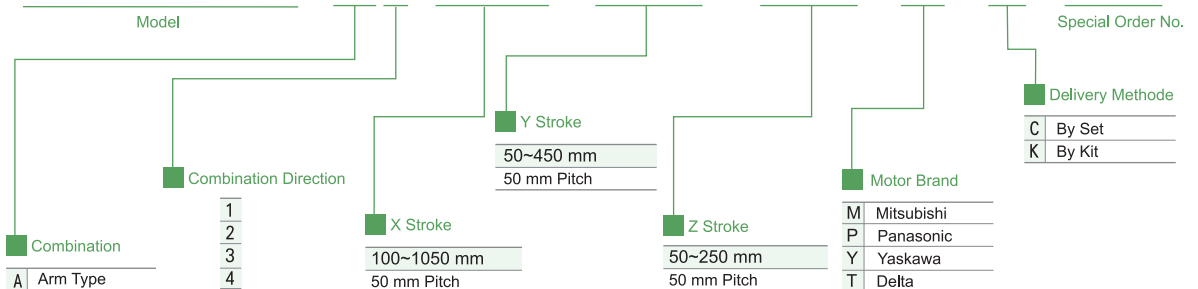
※3 : (Maximum speed is based on the AC servo motor's 3000 RPM)

Maximum Payload

Y Stroke (mm)	
Z Stroke Payload (kg)	50-450
50-250	5

Ordering Method

XYTH442 - A1 - 550 - 400 - 150 - M - C - 001

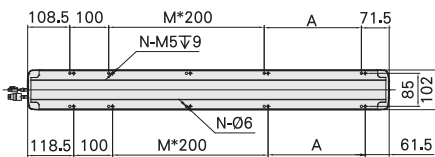
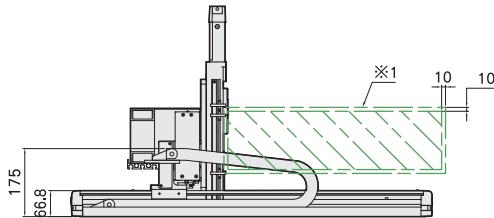
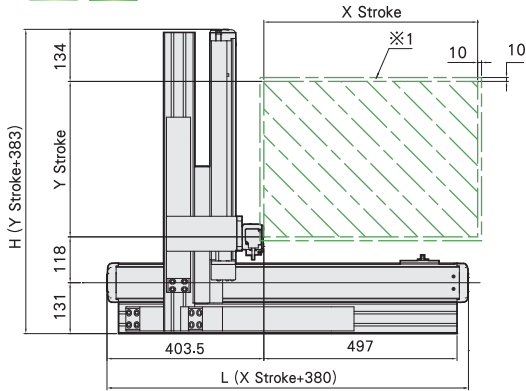


XYTH442-A1 Size

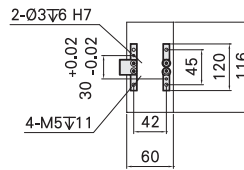
A1



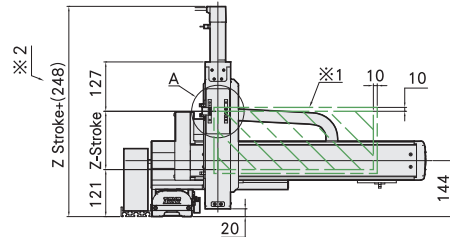
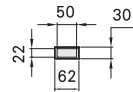
Welcome to download 2D/3D CAD and spec PDF



A-Detail View



XY-Cable Chain



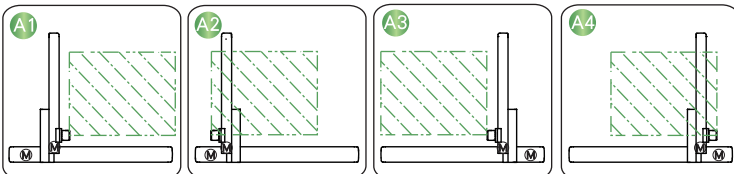
※1 : (When the moving range return to origin, the stop position of table's movement range and mechanical limit.)
 ※2 : (The total height of Z-axis will be different from motor's brands.)

X Stroke (mm)	100	150	200	250	300	350	400	450	500	550	600	650	700	750	800	850	900	950	1000	1050
L	480	530	580	630	680	730	780	830	880	930	980	1030	1080	1130	1180	1230	1280	1330	1380	1430
A	200	50	100	150	200	50	100	150	200	50	100	150	200	50	100	150	200	50	100	150
M	0	1	1	1	1	2	2	2	2	3	3	3	3	4	4	4	4	5	5	5
N	6	8	8	8	8	10	10	10	10	12	12	12	12	14	14	14	14	16	16	16
Maximum Speed (mm/s)※4	800														720	640	560	480	450	320

Y Stroke (mm)	50	100	150	200	250	300	350	400	450
H	433	483	533	583	633	683	733	783	833
Maximum Speed (mm/s)※4	800								

※4: (Maximum speed is refers to the highest safe speed that can be used in stroke, if more than the standard speed, table may produce serious resonance.)

Combination Direction



Accessories

- X-axis Detail Spec. →P86
- Y-axis Detail Spec. →P86
- Z-axis Detail Spec. →P72
- Motor Brand Options →P430

Application
 Standard/Ball Screw
 Rod Type Actuator
 Standard/Ball Type
 Clean Room/Ball Screw
 Clean Room/Ball Type
 Linear Motor
 Multi Axis
 Alignment Stage
 Reference

XYTH
 XYTH-A
 XYTH-G
 XYTH-P
 XYTH-F