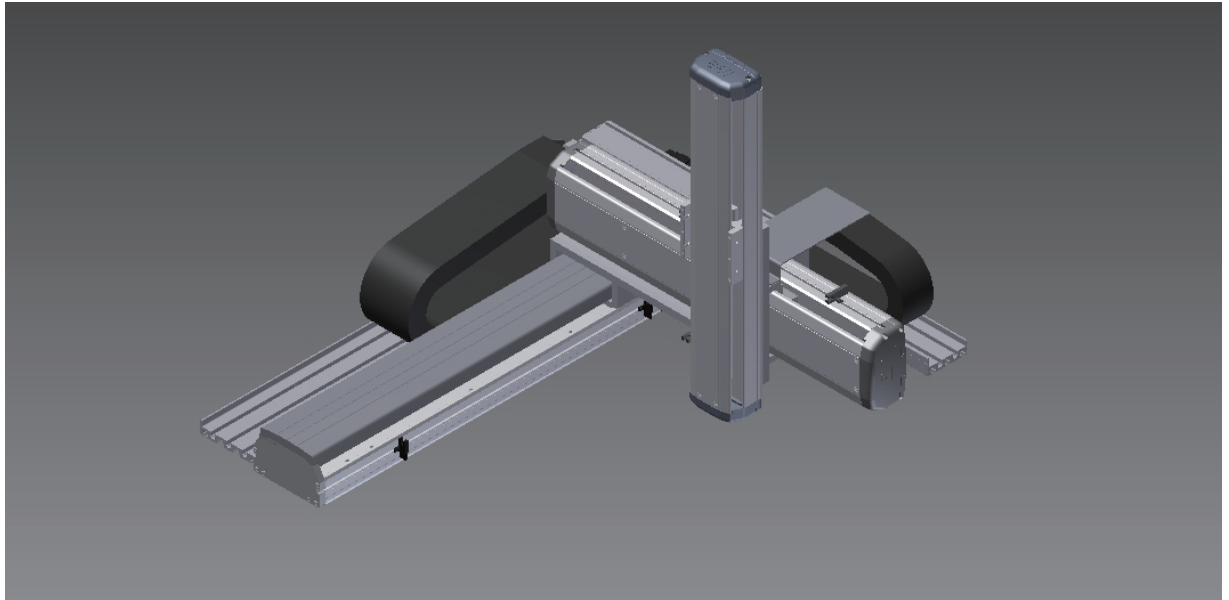


# XYTB653-A

3-axis

Belt Drive



### Maximum Stroke

X axis 3050mm Y axis 550mm Z axis 350mm

### Maximum Speed

X axis 2000mm/s Y axis 1000mm/s Z axis 500mm/s

### AC Servo Motor Output

X axis 200W Y axis 200W Z axis 100W+Brake

### Specification

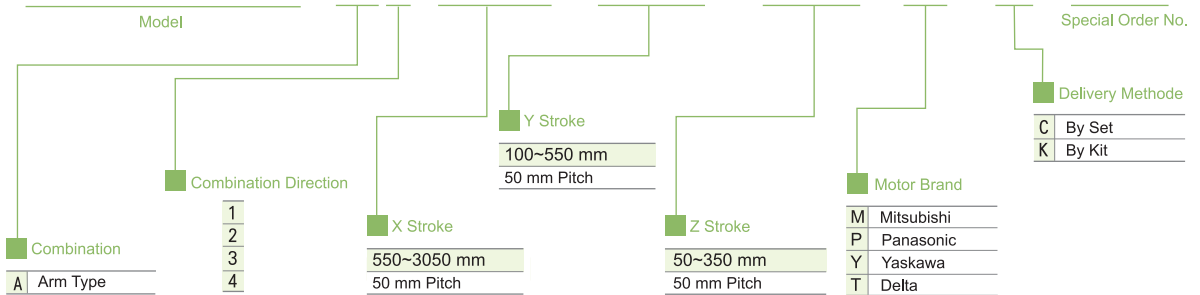
Item	X axis	Y axis	Z axis
Axis Construction	ETB14M	ETH13	ETH10
Repeatability (mm)	±0.04	±0.01	±0.01
Lead (mm)	40	20	10
Maximum Speed (mm/s) ※3	2000	1000	500
Stroke 50 mm Pitch (mm)	550-3050	100-550	50-350
AC Servo Motor Output (w)	200	200	100+Brake
Environment	0-40°C , 85%RH Below		

### Maximum Payload

Z Stroke Payload (kg)	Y Stroke (mm)			
	150	250	350	450
150	9	7	5	3
250	8	6	4	2
350	7	5	3	1

### Ordering Method

# XYTB653-A1-500-300-200-M-C-001

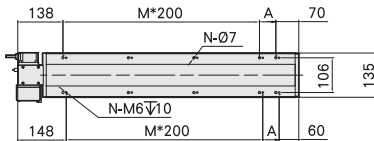
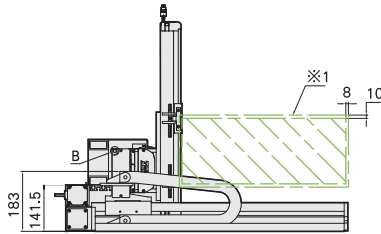
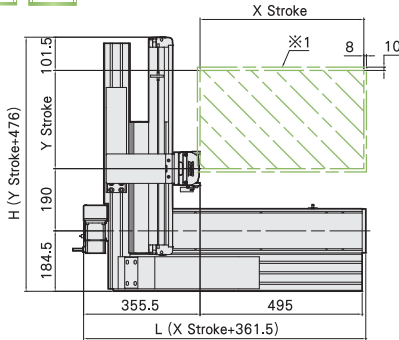


**XYTB653-A1 Size**

**A1**

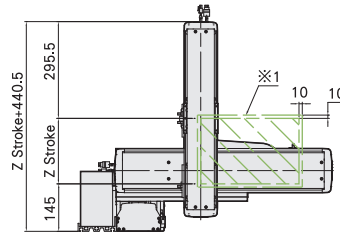
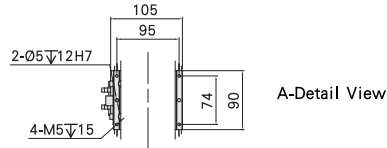
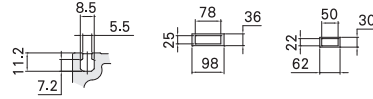


Welcome to download 2D/3D CAD and spec PDF



※1 : (When the moving range return to origin, the stop position of table's movement range and mechanical limit.)

B-Cutaway View X-Cable Chain Y-Cable Chain



※3 : (Maximum speed is based on the AC servo motor's 3000 RPM)

※4 : (Maximum speed is refers to the highest safe speed that can be used in stroke, if more than the standard speed, table may produce serious resonance.)

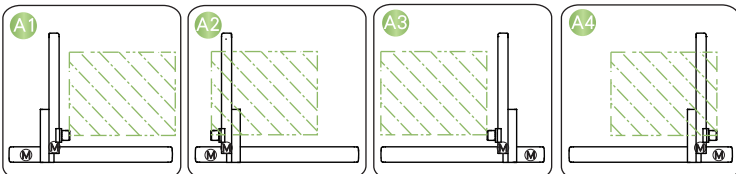
X Stroke (mm)	550	600	650	700	750	800	850	900	950	1000	1050	1100	1150	1200	1250	1300	1350	1400	1450	1500	1550	1600	1650	1700	1750	1800	1850	1900	1950	2000		
L	911.5	961.5	1011.5	1061.5	1111.5	1161.5	1211.5	1261.5	1311.5	1361.5	1411.5	1461.5	1511.5	1561.5	1611.5	1661.5	1711.5	1761.5	1811.5	1861.5	1911.5	1961.5	2011.5	2061.5	2111.5	2161.5	2211.5	2261.5	2311.5	2361.5		
A	100	150	200	50	100	150	200	50	100	150	200	50	100	150	200	50	100	150	200	50	100	150	200	50	100	150	200	50	100	150		
M	3	3	3	4	4	4	4	5	5	5	5	6	6	6	6	7	7	7	7	8	8	8	8	9	9	9	9	10	10	10		
N	10	10	10	12	12	12	12	14	14	14	14	16	16	16	16	18	18	18	18	20	20	20	20	22	22	22	22	24	24	24		
Maximum Speed (mm/s)※4	2000																															

X Stroke (mm)	2050	2100	2150	2200	2250	2300	2350	2400	2450	2500	2550	2600	2650	2700	2750	2800	2850	2900	2950	3000	3050	
L	2411.5	2461.5	2511.5	2561.5	2611.5	2661.5	2711.5	2761.5	2811.5	2861.5	2911.5	2961.5	3011.5	3061.5	3111.5	3161.5	3211.5	3261.5	3311.5	3361.5	3411.5	
A	200	50	100	150	200	50	100	150	200	50	100	150	200	50	100	150	200	50	100	150	200	
M	10	11	11	11	11	12	12	12	12	13	13	13	13	14	14	14	14	15	15	15	15	
N	24	26	26	26	26	28	28	28	28	30	30	30	30	32	32	32	32	34	34	34	34	
Maximum Speed (mm/s)※4	2000																					

Y Stroke (mm)	100	150	200	250	300	350	400	450	500	550
H	576	626	676	726	776	826	876	926	976	1026
Maximum Speed (mm/s)※4	1000									

**Combination Direction**



**Accessories**

X-axis Detail Spec.	→P160	Y-axis Detail Spec.	→P92
Z-axis Detail Spec.	-	Motor Brand Options	→P430

Application  
Standard Ball Screw  
Rod Type Actuator  
Standard Ball Type  
Clean Room Ball Screw  
Clean Room Ball Type  
Linear Motor  
Multi Axis  
Alignment Stage  
Reference

**XYTB**  
XYTB-A  
XYTB-G  
XYTB-F